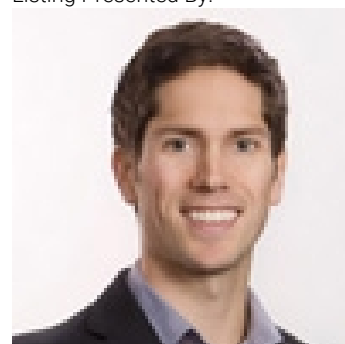


9558 Glenmore Road Lake Country British Columbia

\$2,700,000

Introducing a prime commercial opportunity that's poised to take your business to new heights! Located in Lake Country, between the larger communities of Kelowna and Vernon and nestled on a strategically located, high-exposure corner lot, this property offers a golden ticket to success. Situated just minutes away from Kelowna International airport, it provides unparalleled convenience for travellers and commuters alike. This bustling intersection is close to UBCO, world-renowned wineries and lakes. With its high traffic count and excellent visibility, this property is a beacon for potential customers and clients. Whether you're seeking to launch a new venture or expand an existing one, the possibilities are endless. Zoned C11, Highway Commercial which allows for a breweries and distilleries, hotel, motel, car wash, automotive sales/rentals/repairs, retail space, restaurants, or any business that thrives on exposure and accessibility that cater to the needs of the travelling public. (id:6769)

Listing Presented By:



Originally Listed by:
Royal LePage Downtown Realty

<http://www.annemurphy.ca/>



Royal

Lepage Parkside Realty

PO Box 930; 9925 Main St,
Summerland, BC,

Phone: (250) 462-4888
info@joepeters.ca

The property information on this website is derived from the Canadian Real Estate Association's Data Distribution Facility (DDF®). DDF® references real estate listings held by various brokerage firms and franchisees. The accuracy of information is not guaranteed and should be independently verified. The trademarks REALTOR®, REALTORS® and the REALTOR® logo are controlled by The Canadian Real Estate Association (CREA) and identify real estate professionals who are members of CREA. The trademarks MLS®, Multiple Listing Service® and the associated logos are owned by CREA and identify the quality of services provided by real estate professionals who are members of CREA.