

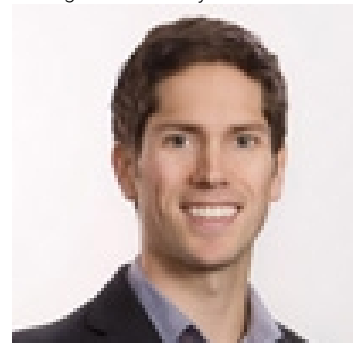


## 9704 Aberdeen Road Land 1 Coldstream British Columbia

\$2,000

The opportunities are endless for this extensive Coldstream industrial lot. With flexible zoning allowing for a multitude of entrepreneurial directions and an abundance of flat, usable land, this space is truly the location to help your business take off. Land measurements are approximate - please verify if important. (id:6769)

Listing Presented By:



Originally Listed by:  
RE/MAX Vernon Salt Fowler

<http://www.saltfowler.com/>



**Royal**

**Lepage Parkside Realty**

PO Box 930; 9925 Main St,  
Summerland, BC,

Phone: (250) 462-4888  
[info@joepeters.ca](mailto:info@joepeters.ca)

The property information on this website is derived from the Canadian Real Estate Association's Data Distribution Facility (DDF®). DDF® references real estate listings held by various brokerage firms and franchisees. The accuracy of information is not guaranteed and should be independently verified. The trademarks REALTOR®, REALTORS® and the REALTOR® logo are controlled by The Canadian Real Estate Association (CREA) and identify real estate professionals who are members of CREA. The trademarks MLS®, Multiple Listing Service® and the associated logos are owned by CREA and identify the quality of services provided by real estate professionals who are members of CREA.