

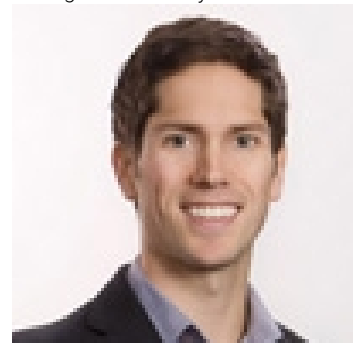


Lot 1 ELSIE HOLMES ROAD Wynndel British Columbia

\$495,000

58 Acres not in the Agricultural Land Reserve! Zoned Country Residential (R2).. Great Development site.. Amazing views to the valley and Selkirk Mountains. Access off of Elsie-Holmes Road in Wynndel. Not many larger pieces like this in the Valley. Call your REALTOR(R) today! (id:6769)

Listing Presented By:



Originally Listed by:
RE/MAX Blue Sky Realty

<http://www.tylerhancock.com>



Royal

Lepage Parkside Realty

PO Box 930; 9925 Main St,
Summerland, BC,

Phone: (250) 462-4888
info@joepeters.ca

The property information on this website is derived from the Canadian Real Estate Association's Data Distribution Facility (DDF®). DDF® references real estate listings held by various brokerage firms and franchisees. The accuracy of information is not guaranteed and should be independently verified. The trademarks REALTOR®, REALTORS® and the REALTOR® logo are controlled by The Canadian Real Estate Association (CREA) and identify real estate professionals who are members of CREA. The trademarks MLS®, Multiple Listing Service® and the associated logos are owned by CREA and identify the quality of services provided by real estate professionals who are members of CREA.