

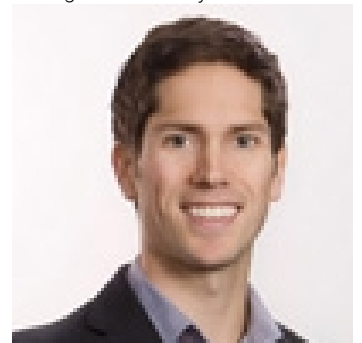


4 PITNEY Road LOT Valemount British Columbia

\$139,000

New Price on this great little acreage just a five minute drive from Valemount. Lot is a generous 2.2 acres with an outstanding view of Canoe Mountain. Located near the end of a no- thru road which has very little traffic and lots of privacy. Could be the perfect spot to build your little getaway or your forever home. This is your chance to own a piece of land surrounded by mountains. (id:6769)

Listing Presented By:



Originally Listed by:
Royal LePage Aspire Realty

<http://www.valemountrealestate.com/>



Royal

Lepage Parkside Realty

PO Box 930; 9925 Main St,
Summerland, BC,

Phone: (250) 462-4888
info@joepeters.ca

The property information on this website is derived from the Canadian Real Estate Association's Data Distribution Facility (DDF®). DDF® references real estate listings held by various brokerage firms and franchisees. The accuracy of information is not guaranteed and should be independently verified. The trademarks REALTOR®, REALTORS® and the REALTOR® logo are controlled by The Canadian Real Estate Association (CREA) and identify real estate professionals who are members of CREA. The trademarks MLS®, Multiple Listing Service® and the associated logos are owned by CREA and identify the quality of services provided by real estate professionals who are members of CREA.