

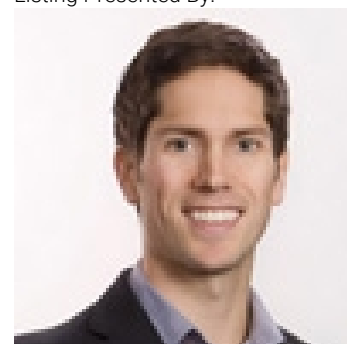


Lot 9 Kirschner Mountain Other Kelowna British Columbia

\$425,000

WELCOME TO KIRSCHNER MOUNTAIN 2.0! New Ownership... Established 2020! BEAUTIFUL VIEWS, GREAT OPPORTUNITIES, EXCELLENT LOCATION, FANTASTIC COMMUNITY! Each of these lots boast spectacular mountain views in what feels like your very own extended backyard! Access to hiking, biking, golfing, and parks right out your front door! Spacious lots with acres of protected green space allowing room to breathe, Kirschner Mountain is a community that offers all the charm of living in the city yet the convenience of quick access to the Airport, Ski Hills, or the downtown City Center with Okanagan Lake just minutes away! Bring your own builder... and build your dream home today! GST applicable (id:6769)

Listing Presented By:



Originally Listed by:
Royal LePage Kelowna



Royal

Lepage Parkside Realty

PO Box 930; 9925 Main St,
Summerland, BC,

Phone: (250) 462-4888
info@joepeters.ca

The property information on this website is derived from the Canadian Real Estate Association's Data Distribution Facility (DDF®). DDF® references real estate listings held by various brokerage firms and franchisees. The accuracy of information is not guaranteed and should be independently verified. The trademarks REALTOR®, REALTORS® and the REALTOR® logo are controlled by The Canadian Real Estate Association (CREA) and identify real estate professionals who are members of CREA. The trademarks MLS®, Multiple Listing Service® and the associated logos are owned by CREA and identify the quality of services provided by real estate professionals who are members of CREA.