

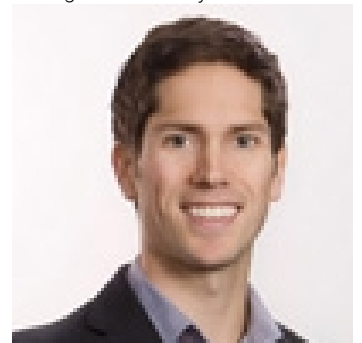


Lot B Hallam Drive Lake Country British Columbia

\$1,290,000

Create one or two dream residences on this expansive 6.9-acre RR2 lot, with stunning panoramic views of Lake Okanagan, Wood Lake, vineyards, and surrounding valleys and mountains. Owners have completed a shared driveway off Cemetery Rd. with technical reports and due diligence for potential subdivision with District of Lake Country. The property may be subdivided: north-south for a stunning view lot on top and a flat Hallam Dr. lot OR east-west for two extraordinary view lots on top of the hill. Enjoy close proximity to six renowned wineries, a variety of restaurants, beaches, golf courses, skiing resorts, schools, UBCO and the Kelowna International Airport. Enjoy exceptionally private seclusion in a residential setting. (id:6769)

Listing Presented By:



Originally Listed by:
Chamberlain Property Group



Royal

Lepage Parkside Realty

PO Box 930; 9925 Main St,
Summerland, BC,

Phone: (250) 462-4888
info@joepeters.ca

The property information on this website is derived from the Canadian Real Estate Association's Data Distribution Facility (DDF®). DDF® references real estate listings held by various brokerage firms and franchisees. The accuracy of information is not guaranteed and should be independently verified. The trademarks REALTOR®, REALTORS® and the REALTOR® logo are controlled by The Canadian Real Estate Association (CREA) and identify real estate professionals who are members of CREA. The trademarks MLS®, Multiple Listing Service® and the associated logos are owned by CREA and identify the quality of services provided by real estate professionals who are members of CREA.