

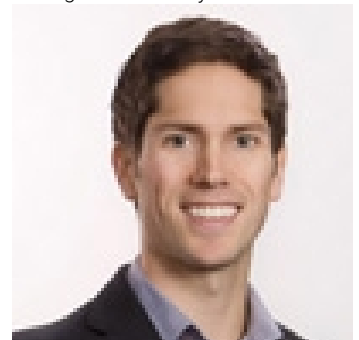


Shediac New Brunswick

\$350,000

APPROX +-0.42 ACRES OF LAND! ATTENTION ALL BUILDERS & DEVELOPERS! DON'T MISS OUT ON THIS RARE PIECE OF LAND WHICH IS WITHIN WALKING DISTANCE TO THE WATER, IS LOCATED IN A PRIME RESIDENTIAL AREA AND IS AWAITING DEVELOPMENT ON GALLAGHER STREET IN SHEDIAC! Zoning is R-1. Build your dream home with a partial view of Shediac Bay and be situated in close proximity to the Yacht Club, John Lyon's park, adjacent to walking trails, schools, shopping, restaurants and all other amenities package. There is access for Municipal Water and Sewer! The property is located on a corner lot with streets surrounding the property on 3 sides. There are no unimpeded views so the property will get lots of sun. It is approx, a 5-8 minute drive to Parlee Beach Provincial Park and the Pointe du Chene wharf, a 20 minute drive to the Airport and a 25 minute drive to Moncton! For more information please call your REALTOR(R) today! (id:6769)

Listing Presented By:



Originally Listed by:
RE/MAX Quality Real Estate Inc.

<http://www.stuartlyons.com/>



Royal

Lepage Parkside Realty

PO Box 930; 9925 Main St,
Summerland, BC,

Phone: (250) 462-4888
info@joepeters.ca

The property information on this website is derived from the Canadian Real Estate Association's Data Distribution Facility (DDF®). DDF® references real estate listings held by various brokerage firms and franchisees. The accuracy of information is not guaranteed and should be independently verified. The trademarks REALTOR®, REALTORS® and the REALTOR® logo are controlled by The Canadian Real Estate Association (CREA) and identify real estate professionals who are members of CREA. The trademarks MLS®, Multiple Listing Service® and the associated logos are owned by CREA and identify the quality of services provided by real estate professionals who are members of CREA.