



1800 Richter Street PH12 Kelowna British Columbia

\$597,000

PENTHOUSE LIVING in Urbana, the newest building in Central Green by Mission Group. This TOP FLOOR, corner unit 2 bed 2 bath condo features high 13 foot vaulted ceilings with windows spanning to the top, allowing tons of natural light to come in from the west. From the balcony, enjoy views of Mount Boucherie and live concerts put on by the City during summer months in Rowcliffe Park. The open concept kitchen features quartz countertops, a stainless steel appliance package and sleek, modern cabinetry. The Primary bedroom fits a king bed and has a walk-in closet with custom wood organizers. Use the second bedroom as a home office or guest room. Side by side full size Whirlpool washer and dryer in the laundry closet which doubles as extra in-suite storage. A/C and HRV system for fresh air intake. PETS OK (dogs and cats with no size or breed restrictions), with an off leash dog run outside the building as part of the 5 acre park. 1 underground parking stall and 1 storage locker included. Bicycle storage on site as well. (id:6769)

Full ensuite bathroom 9'5" x 6'8"

Living room 12'1" x 12'7"

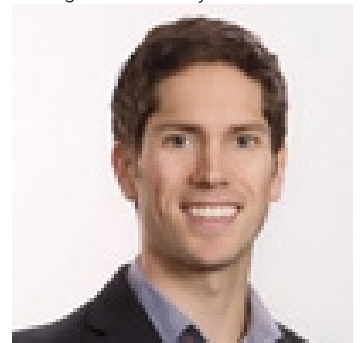
Full bathroom 9'5" x 6'8"

Bedroom 9'4" x 11'10"

Primary Bedroom 14'1" x 10'

Kitchen 13' x 12'1"

Listing Presented By:



Originally Listed by:
eXp Realty (Kelowna)

<http://www.homesearchkelowna.com/>



Royal

Lepage Parkside Realty

PO Box 930; 9925 Main St,
Summerland, BC,

Phone: (250) 462-4888
info@joepeters.ca

The property information on this website is derived from the Canadian Real Estate Association's Data Distribution Facility (DDF®). DDF® references real estate listings held by various brokerage firms and franchisees. The accuracy of information is not guaranteed and should be independently verified. The trademarks REALTOR®, REALTORS® and the REALTOR® logo are controlled by The Canadian Real Estate Association (CREA) and identify real estate professionals who are members of CREA. The trademarks MLS®, Multiple Listing Service® and the associated logos are owned by CREA and identify the quality of services provided by real estate professionals who are members of CREA.