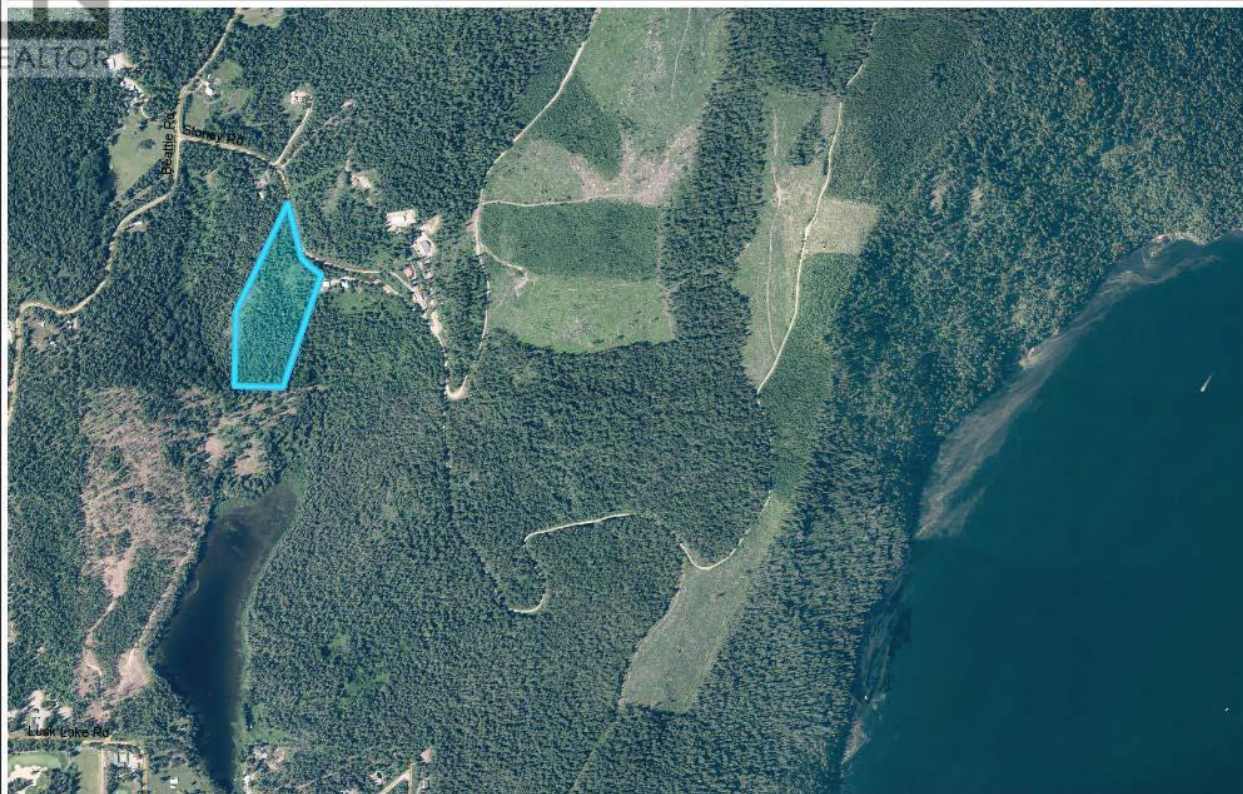


## North Okanagan Map



© Corporation of the City of Vernon & Regional District of North Okanagan 1:10,720

This drawing has been produced by the City of Vernon and the Regional District of North Okanagan's Geographic Information Systems. The data provided is derived from a variety of sources with varying levels of accuracy. The City of Vernon and the Regional District of North Okanagan make no warranty or representation, expressed or implied, with the regard to the correctness, accuracy and/or reliability of the information contained herein.

## 40 Stoney Road Enderby British Columbia

\$449,000

Uncover the hidden gem of 12.39 acres of vacant land, 30 minutes from Enderby, BC. Perfectly positioned, this property is only a short drive to Mabel Lake, Mabel Lake Golf Course, Shuswap River and the popular Hunter snowmobiling Range, offering year-round outdoor adventure. Enjoy the convenience of Ashton Creek's nearest convenience store. The property is gently rolling hillside with views; ideal for building your dream home or retreat. Embrace the opportunity to create your ideal lifestyle in this enchanting location. (id:6769)

Listing Presented By:



Originally Listed by:  
RE/MAX Vernon

**ROYAL LEPAGE**  
Locations West Realty

**Royal LePage Locations West Realty**

484 Main Street, Penticton, BC,

Phone: 250-493-2244  
tammykozari@gmail.com

The property information on this website is derived from the Canadian Real Estate Association's Data Distribution Facility (DDF®). DDF® references real estate listings held by various brokerage firms and franchisees. The accuracy of information is not guaranteed and should be independently verified. The trademarks REALTOR®, REALTORS® and the REALTOR® logo are controlled by The Canadian Real Estate Association (CREA) and identify real estate professionals who are members of CREA. The trademarks MLS®, Multiple Listing Service® and the associated logos are owned by CREA and identify the quality of services provided by real estate professionals who are members of CREA.