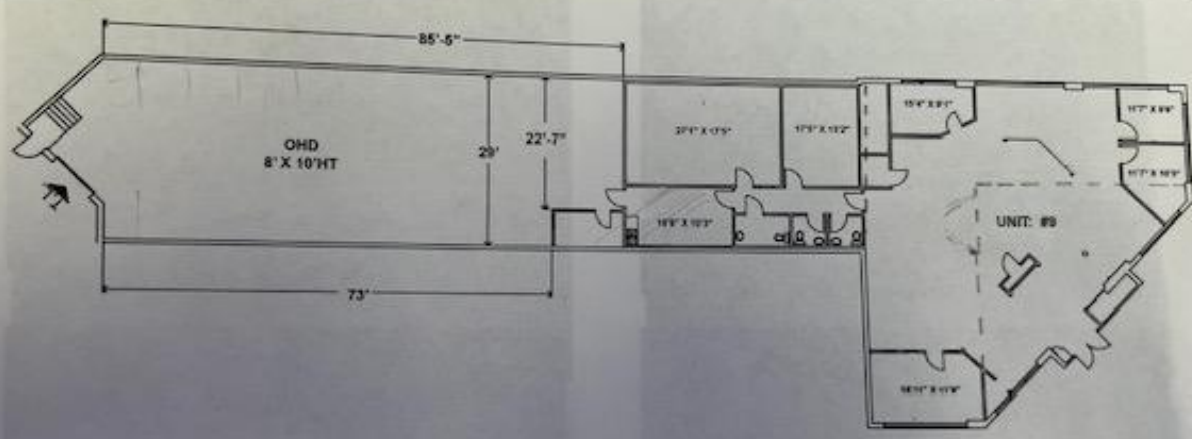




APPENDIX A - As-Built Floor Plan



LIVING REALTY INC., Brokerage

245 West Beaver Creek Road Unit 9 Richmond Hill Beaver Creek Business Park Ontario

\$21

Excellent Exposure Corner Ground Industrial Condominium Unit at Beaver Creek Business Plaza. Prestigious Beaver Creek Business Park with Easy Access to Highways, Public Transit and An Abundance of Shopping, Services, and Recreational Amenities. Approximately 6,826 SF, 9 feet Ceiling Office and 18 Feet Clear Roof Height Industrial Warehouse (id:6769)

Listing Presented By:



Originally Listed by:
LIVING REALTY INC.



Royal LePage Locations West Realty

484 Main Street , Penticton, BC,

Phone: 250-493-2244
tammykozari@gmail.com

The property information on this website is derived from the Canadian Real Estate Association's Data Distribution Facility (DDF®). DDF® references real estate listings held by various brokerage firms and franchisees. The accuracy of information is not guaranteed and should be independently verified. The trademarks REALTOR®, REALTORS® and the REALTOR® logo are controlled by The Canadian Real Estate Association (CREA) and identify real estate professionals who are members of CREA. The trademarks MLS®, Multiple Listing Service® and the associated logos are owned by CREA and identify the quality of services provided by real estate professionals who are members of CREA.