



280 MIDDLE BENCH Road Penticton British Columbia

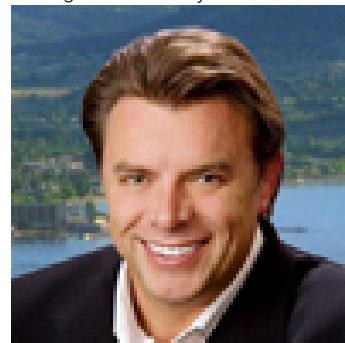
\$999,000

Embrace the peace and quiet of this 4500 sq ft rancher with a walk-out basement and a legal suite, offering the serenity of backing onto an orchard and showcasing picturesque valley and mountain views. Situated conveniently close to town, wineries and the KVR trail, this home is perfectly located. On one side of the house, you'll find 2 bedrooms, one with large ensuite and walk-in closet. Open living and kitchen and 2nd bedroom while on the other end, there is a self contained 1 bedroom plus den legal suite. Perfect set-up for family members or extra income. The walk-out basement is unfinished and waiting for your ideas. All measurements are approx and buyer should verify if important. (id:6769)

Primary Bedroom 13'9" x 12'3"
Living room 21'4" x 11'8"
Living room 11'5" x 12'
Kitchen 11'9" x 6'7"
Kitchen 13' x 11'2"
5pc Ensuite bath Measurements not available
Dining room 7' x 11'

Dining room 12'8" x 11'3"
Den 7'7" x 12'
Bedroom 12'5" x 8'2"
Bedroom 12'4" x 10'2"
3pc Bathroom Measurements not available
3pc Bathroom Measurements not available

Listing Presented By:



Originally Listed by:
Royal LePage Locations West



Royal LePage Locations West Realty

484 Main Street , Penticton, BC,
Phone: (250) 462-5464
nicholasparker@royallepage.ca

The property information on this website is derived from the Canadian Real Estate Association's Data Distribution Facility (DDF®). DDF® references real estate listings held by various brokerage firms and franchisees. The accuracy of information is not guaranteed and should be independently verified. The trademarks REALTOR®, REALTORS® and the REALTOR® logo are controlled by The Canadian Real Estate Association (CREA) and identify real estate professionals who are members of CREA. The trademarks MLS®, Multiple Listing Service® and the associated logos are owned by CREA and identify the quality of services provided by real estate professionals who are members of CREA.