



1200 RANCHER CREEK Road 120A Osoyoos British Columbia

\$59,900

1/4 share ownership of a quiet, ground floor newly renovated lakeview suite located at the award winning Spirit Ridge Vineyard Resort & Spa part of the Unbound Collection by Hyatt. This desirable 1066 square foot suite has 2 bedrooms King , 2Q bed, 2 bathrooms, comes fully equipped and has in suite laundry. Enjoy relaxing on your deck with partial lake views. Let Hyatt generate extra income for you when you are not utilizing your suite. Private beach, 2 pools, cultural center, golf course, Nk'mip Winery just to name a few things near and on the site to do. All measurements are approximate and should be verified. Many owner privileges & travel exchange opportunities. Photo's are not of exact unit. Property is not freehold strata, it is a pre-paid crown lease on native land with a Homeowners Association. HOA fees apply. (id:6769)

Primary Bedroom 14'0" x 11'0"

Living room 12'0" x 11'0"

Kitchen 8'0" x 8'0"

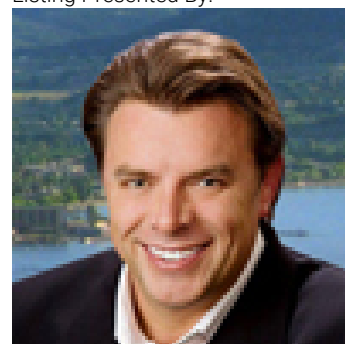
4pc Ensuite bath Measurements not available

3pc Ensuite bath Measurements not available

Dining room 8'0" x 10'0"

Bedroom 9'0" x 15'0"

Listing Presented By:



Originally Listed by:
Royal LePage Desert Oasis Rlty

http://www.royalpage.ca/pamela_hass



Royal

LePage Locations West Realty

484 Main Street , Penticton, BC,

Phone: (250) 462-5464
nicholasparker@royalpage.ca

The property information on this website is derived from the Canadian Real Estate Association's Data Distribution Facility (DDF®). DDF® references real estate listings held by various brokerage firms and franchisees. The accuracy of information is not guaranteed and should be independently verified. The trademarks REALTOR®, REALTORS® and the REALTOR® logo are controlled by The Canadian Real Estate Association (CREA) and identify real estate professionals who are members of CREA. The trademarks MLS®, Multiple Listing Service® and the associated logos are owned by CREA and identify the quality of services provided by real estate professionals who are members of CREA.