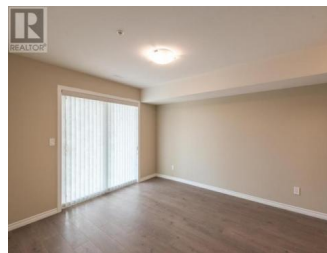


Penticton, British Columbia

Beds: 2 Baths: 2

\$500,000



Skaha Lake Towers, Phase 2: BRAND NEW & under construction, steel & concrete condos just blocks to Skaha Lake & parks! With completion in 2021 now is the time to pick your condo & choose from a selection of finishing colors & upgrade options. Every unit comes with a secure covered parking stall, a storage locker and all six appliances. The building has 2 elevators, a bike lock up room, & social room. This well laid out middle unit features 1223 sqft of open plan design, with 2 bedrms + a den. This unit boasts two decks, large kitchen with an island & tons of cupboard space, & seating for 2 stools. The spacious living/dining rm has two sets of patio doors, a gas fireplace, & access outside. The well appointed master bedrm has an en-suite with double sinks & large shower, a walk in closet and patio doors to the deck. The bonus den makes a perfect office,+ theres a good sized guest bedroom. (id:6769)

Main level Floor

- Living room
- Kitchen
- Den
- Bedroom
- Master bedroom
- 4pc Bathroom
- 3pc Ensuite bath

Buyers Agent:

Team Thompson Real Estate

Group | RE/MAX Penticton Realty

e: tanya@teamthompson.com

p: 250-487-7000

<https://teamthompson.com/>

