



Rural Parkland County Alberta

\$995,000

Discover this EXECUTIVE hilltop bungalow situated on 2.09 acres, just 5 minutes from Stony Plain w/paved access all the way. Nestled in the Hills of Twin Lakes--surrounded by beautiful homes, a nature reserve, & rolling landscapes--this home offers rare countryside views from your vaulted windows & covered deck. This luxurious home provides a serene country setting remarkably close to town, & only minutes away from the Chickakoo Lake Recreation Area. Upgrades to this home include Hardie board siding, 200Amp power service, 240 Volt plugs, RV plug in, no maintenance decking, irrigation for planters around the house, an oversized 40x25 heated garage w/floor drain, hot tub & many landscaping upgrades. Inside the home, features include vaulted ceilings, granite countertops, real wood cabinets, 9' ceilings in the basement creating exceptional added living space, a walk-through pantry, two gas fireplaces, hardwood floors, heated ensuite floors, a glass & tile shower & main floor laundry for added convenience. (id:6769)

Family room 10.81 m X 4.7 m

Bedroom 3 3.9 m X 4.5 m

Bedroom 4 4.45 m X 4.74 m

Storage 4.22 m X 2.64 m

Utility room 3.62 m X 5.23 m

Living room 5.39 m X 5.36 m

Dining room 4.26 m X 2.46 m

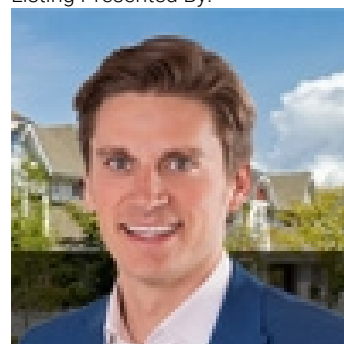
Kitchen 4.41 m X 4.39 m

Primary Bedroom 3.66 m X 5.49 m

Bedroom 2 3.2 m X 3.74 m

Laundry room 2.22 m X 1.58 m

Listing Presented By:



Originally Listed by:
Royal LePage Noralta Real Estate

<https://tysonmoroz.com/>



**Royal
Le Page Noralta Spruce Grove**

#230, 70 Mcleod Ave, Spruce
Grove, AB,

Phone: 780-920-0550

Fax:

tyson@royalpage.ca

The property information on this website is derived from the Canadian Real Estate Association's Data Distribution Facility (DDF®). DDF® references real estate listings held by various brokerage firms and franchisees. The accuracy of information is not guaranteed and should be independently verified. The trademarks REALTOR®, REALTORS® and the REALTOR® logo are controlled by The Canadian Real Estate Association (CREA) and identify real estate professionals who are members of CREA. The trademarks MLS®, Multiple Listing Service® and the associated logos are owned by CREA and identify the quality of services provided by real estate professionals who are members of CREA.