



Stony Plain Alberta

\$499,000

Unique location on a quiet street overlooking the golf course, with great views and plenty of street parking. This property is situated on the east side of Stony Plain, with quick access to 16A. The home features large bedrooms upstairs with brand-new carpet throughout the upper level. On the main level, you'll find a spacious open layout with a kitchen that includes granite countertops and a walkthrough pantry. Downstairs, there are two additional bedrooms and a large, open family room. The laundry is conveniently located on the top level next to the primary bedroom. In the backyard, there's a two-tiered deck with an included gazebo, and a hot tub (currently has a leak). The garage is larger than average, measuring 23' x 22.5' in interior dimensions. Enjoy nearby walking trails, golf, and parks. Ready for immediate occupancy. (id:6769)

Bedroom 4 10' x 14'

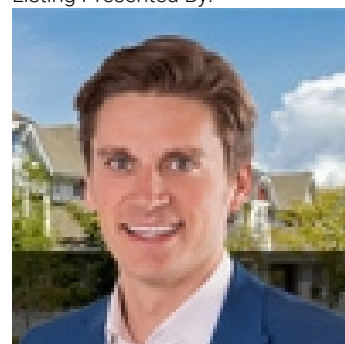
Bedroom 5 10' x 12'

Primary Bedroom 15' x 17'

Bedroom 2 11' x 11'

Bedroom 3 11' x 13'

Listing Presented By:



Originally Listed by:
Royal LePage Noralta Real Estate

<https://tysonmoroz.com/>



CREA

DDF

#230, 70 Mcleod Ave , Spruce
Grove, AB,

Phone: 780-920-0550
tyson@royallepage.ca

The property information on this website is derived from the Canadian Real Estate Association's Data Distribution Facility (DDF®). DDF® references real estate listings held by various brokerage firms and franchisees. The accuracy of information is not guaranteed and should be independently verified. The trademarks REALTOR®, REALTORS® and the REALTOR® logo are controlled by The Canadian Real Estate Association (CREA) and identify real estate professionals who are members of CREA. The trademarks MLS®, Multiple Listing Service® and the associated logos are owned by CREA and identify the quality of services provided by real estate professionals who are members of CREA.