



## Rural Parkland County Alberta

\$650,000

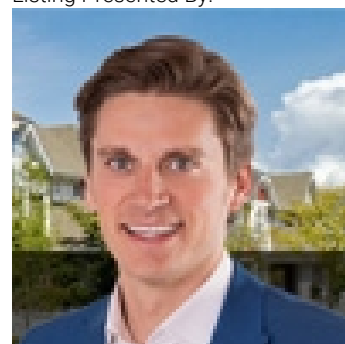
Tucked away in the desirable community of Mayfair Heights, this secluded property offers a peaceful retreat surrounded by mature trees—just 10 minutes from Spruce Grove and 5 minutes from Stony Plain. Built in 1998, the two-storey home sits on a raised foundation, allowing for larger windows and more natural light in the basement. Updates include shingles. Inside, the main floor features a spacious primary bedroom and showcases unique architectural design, with an open-to-below layout where the upper level overlooks the bright and airy living room. Warm wood accents and two wood-burning fireplaces enhance the cozy, inviting atmosphere throughout. The unfinished basement offers potential for an additional bedroom and expanded living space, giving you the flexibility to customize. Outside, you'll find a triple car garage with power, as well as a 12' x 24' shed built over a massive cistern—estimated to hold up to 17,000 gallons. The property is serviced by a septic tank and field system. 33 x 23' Garage. (id:6769)

Primary Bedroom Measurements not available

Bedroom 3 Measurements not available

Bedroom 2 Measurements not available

Listing Presented By:



Originally Listed by:  
Royal LePage Noralta Real Estate

<https://tysonmoroz.com/>



**Royal**

**Le Page Noralta Spruce Grove**

#230, 70 Mcleod Ave , Spruce Grove, AB,

Phone: 780-920-0550

Fax:

[tyson@royallepage.ca](mailto:tyson@royallepage.ca)

The property information on this website is derived from the Canadian Real Estate Association's Data Distribution Facility (DDF®). DDF® references real estate listings held by various brokerage firms and franchisees. The accuracy of information is not guaranteed and should be independently verified. The trademarks REALTOR®, REALTORS® and the REALTOR® logo are controlled by The Canadian Real Estate Association (CREA) and identify real estate professionals who are members of CREA. The trademarks MLS®, Multiple Listing Service® and the associated logos are owned by CREA and identify the quality of services provided by real estate professionals who are members of CREA.