



Rural Parkland County Alberta

\$1,500,000

Premiere luxury walkout bungalow showcasing unparalleled panoramic views in Parkland County. Conveniently located just 15 minutes west of Edmonton and a mere 5 minutes north of Spruce Grove. Custom-designed to maximize its elevated vantage point, featuring expansive windows that offer stunning views from every room in the home. Thoughtfully crafted with low-maintenance features, including durable Durdecking, exposed aggregate sidewalks & patios, and a paved driveway scheduled for completion this spring. The home's construction boasts premium stucco with enhanced insulation, triple-pane windows, a robust 200-amp electrical system, and under-slab insulation for optimal efficiency. The gourmet kitchen, featuring dual islands and abundant storage, is expertly designed for seamless entertaining and effortless organization. Additional features include a wine room, gym, full wet bar, and hidden theatre room. The 1800 Sqft garage features 8x12' doors, power ready for EV chargers and floor drains. W/Drilled well. (id:6769)

Family room 6.71 m X 5.79 m

Bedroom 3 4.75 m X 4.08 m

Media 3.66 m X 5.49 m

Other 4.15 m X 3.72 m

Living room 5.18 m X 5.79 m

Dining room 3.23 m X 4.15 m

Kitchen Measurements not available

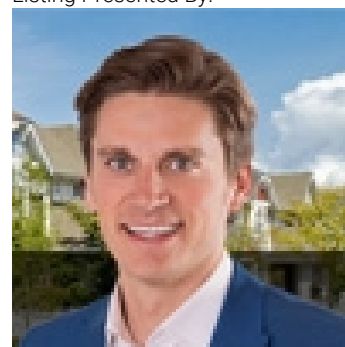
Den 4.21 m X 3.66 m

Primary Bedroom 4.75 m X 4.27 m

Bedroom 2 3.72 m X 3.35 m

Laundry room Measurements not available

Listing Presented By:



Originally Listed by:
Royal LePage Noralta Real Estate

<https://tysonmoroz.com/>



Royal

Le Page Noralta Spruce Grove

#230, 70 Mcleod Ave , Spruce Grove, AB,

Phone: 780-920-0550

Fax:

tyson@royalpage.ca

The property information on this website is derived from the Canadian Real Estate Association's Data Distribution Facility (DDF®). DDF® references real estate listings held by various brokerage firms and franchisees. The accuracy of information is not guaranteed and should be independently verified. The trademarks REALTOR®, REALTORS® and the REALTOR® logo are controlled by The Canadian Real Estate Association (CREA) and identify real estate professionals who are members of CREA. The trademarks MLS®, Multiple Listing Service® and the associated logos are owned by CREA and identify the quality of services provided by real estate professionals who are members of CREA.