



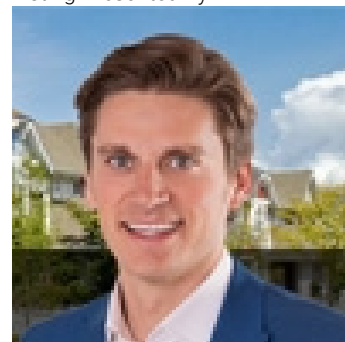
Lines are only approximate.

Rural Parkland County Alberta

\$450,000

WATERFRONT 1.11 acre bare land LAKE LOT in West Point Estates at JACKFISH LAKE! This property is just 15 minutes West of Stony Plain/Spruce Grove w/pavement all the way & has easy access via Highways 16 & 770 offering an easy city commute w/downtown Edmonton just 45 minutes away. Well treed, sloping lot w/large cleared area perfect for building your dream home & private dock. Gas, power & telephone are all at the property line. Jackfish Lake offers some of the best summer/winter conditions for recreational watersport activities such as waterskiing, canoeing, kayaking & paddle boarding & is a spring fed, deep, clean lake great for fishing enthusiasts. RARE opportunity to own a sought after lakefront property in a new subdivision where your family can create memories for generations. Your lakeside LUXURY dream awaits you! (id:6769)

Listing Presented By:



Originally Listed by:
Royal LePage Noralta Real Estate

<https://tysonmoroz.com/>



CREA

DDF

#230, 70 Mcleod Ave , Spruce
Grove, AB,

Phone: 780-920-0550
tyson@royallepage.ca

The property information on this website is derived from the Canadian Real Estate Association's Data Distribution Facility (DDF®). DDF® references real estate listings held by various brokerage firms and franchisees. The accuracy of information is not guaranteed and should be independently verified. The trademarks REALTOR®, REALTORS® and the REALTOR® logo are controlled by The Canadian Real Estate Association (CREA) and identify real estate professionals who are members of CREA. The trademarks MLS®, Multiple Listing Service® and the associated logos are owned by CREA and identify the quality of services provided by real estate professionals who are members of CREA.