



Rural Lac Ste. Anne County Alberta

\$275,000

Charming year round cottage just a Stone's throw from the shores of Lac Ste. Anne, with a spot for your boat on The Village's Dock available to you. Start your family's LAKE LIFE journey w/this cozy 2bed Bungalow located in the SUMMER VILLAGE of YELLOWSTONE backing onto a green space that takes you right to the waters edge. Less than an hour from Edmonton & move in ready featuring extensive upgrades to the home including: new bathroom, kitchen, updated fixtures, NEW flooring throughout, Astoria lighting, upgraded walls & insulation, NEW HE furnace, A/C, fuse box/wiring throughout, new wood stove w/chimney & fire guard, hot water tank, shingles, hot tub & outside gazebo plus a fresh coat of paint inside & out! Enjoy an outdoor paradise w/lavish perennial gardens providing a cover of privacy & offering a spectacular rainbow of summer color for your enjoyment! Seize this incredible opportunity to invest in endless summer adventures with family & friends and make this charming lake retreat your own! (id:6769)

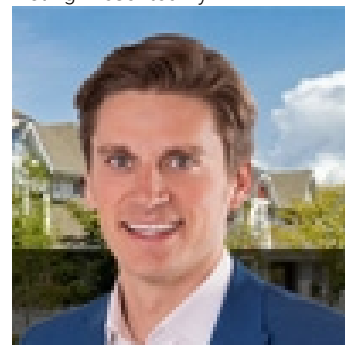
Living room Measurements not available

Kitchen Measurements not available

Primary Bedroom Measurements not available

Bedroom 2 Measurements not available

Listing Presented By:



Originally Listed by:
Royal LePage Noralta Real Estate

<https://tysonmoroz.com/>



Royal

Le Page Noralta Spruce Grove

#230, 70 Mcleod Ave , Spruce Grove, AB,

Phone: 780-920-0550

Fax:

tyson@royallepage.ca

The property information on this website is derived from the Canadian Real Estate Association's Data Distribution Facility (DDF®). DDF® references real estate listings held by various brokerage firms and franchisees. The accuracy of information is not guaranteed and should be independently verified. The trademarks REALTOR®, REALTORS® and the REALTOR® logo are controlled by The Canadian Real Estate Association (CREA) and identify real estate professionals who are members of CREA. The trademarks MLS®, Multiple Listing Service® and the associated logos are owned by CREA and identify the quality of services provided by real estate professionals who are members of CREA.