



Rural Parkland County Alberta

\$1,199,000

Executive ACREAGE w/SHOP in Lake Ridge Estates; 1/2 acre nestled amongst the breathtaking backdrop of Lois Holes Nature Reserve w/full city services, perfectly located between Edmonton, St. Albert & Spruce Grove. Elegant bungalow w/4bed (2up/2down) & 4bath. Designer features include: 13' main flr ceilings, 6 burner gas stove, butlers pantry, walk-in closets, luxury master ensuite, 2nd main flr bedroom w/private en-suite, stone faced gas fireplace, main flr laundry, grand windows, open beam staircase, sunny kitchen/living room, built in sound system, theater room, wet bar, new boiler, built in fire suppression, reverse osmosis, & water softener. Private, south facing outdoor oasis complete w/no maintenance deck, stone patio, outdoor kitchen w/built in Ngas BBQ & Ngas fire table. Fully fenced w/low maintenance landscaping, artificial grass & built in dog run. Attached 25x33 TRIPLE car garage w/8' door is heated. Detached 30x30 SHOP w/10' door is heated/insulated & plumbed w/sink. (id:6769)

Bedroom 3 Measurements not available

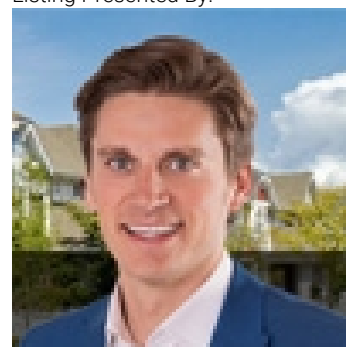
Bedroom 4 Measurements not available

Media Measurements not available

Primary Bedroom Measurements not available

Bedroom 2 Measurements not available

Listing Presented By:



Originally Listed by:
Royal LePage Noralta Real Estate

<https://tysonmoroz.com/>



CREA

DDF

#230, 70 Mcleod Ave , Spruce Grove, AB,

Phone: 780-920-0550
tyson@royallepage.ca

The property information on this website is derived from the Canadian Real Estate Association's Data Distribution Facility (DDF®). DDF® references real estate listings held by various brokerage firms and franchisees. The accuracy of information is not guaranteed and should be independently verified. The trademarks REALTOR®, REALTORS® and the REALTOR® logo are controlled by The Canadian Real Estate Association (CREA) and identify real estate professionals who are members of CREA. The trademarks MLS®, Multiple Listing Service® and the associated logos are owned by CREA and identify the quality of services provided by real estate professionals who are members of CREA.