



Spruce Grove Alberta

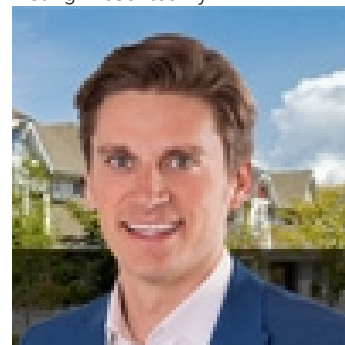
\$599,900

Discover a private natural oasis in the backyard: waterfalls, mature trees, bubbling rocks, a covered timber patio, terraced landscaping, and a barrel hot tub create an idyllic retreat. A true masterclass in landscape design. Inside, this fully renovated home boasts a modern kitchen, new floors, doors, black-clad windows (2022), furnace (2019), A/C (2022), shingles (2018), and hot water tank (2019). Luxury features include waterfall granite counters, floor-to-ceiling cabinets, floating bathroom vanities, induction stovetop, upgraded garage door, permanent eaves GEM lighting, heated garage, black stainless appliances, vaulted ceilings in the bonus room, and luxury vinyl floors throughout every level. Enjoy a built-in wood-burning fireplace wrapped in stone with a timber mantle. It also features a natural gas backup generator. A once 3rd bedroom upstairs was converted into large luxury laundry room. Centrally located in sought-after area, next to the city's largest forested walking trail system. (id:6769)

Primary Bedroom Measurements not available

Bedroom 2 Measurements not available

Listing Presented By:



Originally Listed by:
Royal LePage Noralta Real Estate

<https://tysonmoroz.com/>



Royal

Le Page Noralta Spruce Grove

#230, 70 Mcleod Ave , Spruce
Grove, AB,

Phone: 780-920-0550

Fax:

tyson@royallepage.ca

The property information on this website is derived from the Canadian Real Estate Association's Data Distribution Facility (DDF®). DDF® references real estate listings held by various brokerage firms and franchisees. The accuracy of information is not guaranteed and should be independently verified. The trademarks REALTOR®, REALTORS® and the REALTOR® logo are controlled by The Canadian Real Estate Association (CREA) and identify real estate professionals who are members of CREA. The trademarks MLS®, Multiple Listing Service® and the associated logos are owned by CREA and identify the quality of services provided by real estate professionals who are members of CREA.