



Spruce Grove Alberta

\$424,000

NO Rear neighbors WALK-OUT duplex backing the POND!! IMMACULATE 3bed|3bath 2 Storey w/DOUBLE attached garage. Conveniently tucked away on a quiet Cul de Sac in Aspen Glen w/parks, schools, golf course & essential shopping services all nearby. MOVE IN READY featuring an open concept main floor plan, w/9ft ceilings & lrg windows that envelope this home in natural light boasting a crisp white kitchen w/SS appliances & modern quartz cntrs overlooking the adjoining dining/living rm space. Upstairs you'll find a spacious master bedrm w/4pce ensuite & walk-in closet, convenient top floor laundry/storage rm, 4pce bathrm & TWO more bedrooms. The walk-out basement awaits & offers unlimited potential for added living space/extra bedrms as needed. Homes added features include: TRIPLE PANE windows, central A/C, SMART thermostat, & custom blinds. Enjoy bird watching through the seasons from the west facing back deck that overlooks the pond & its many visitors. Yard fully fenced, complete w/shed & gazebo frame. (id:6769)

Living room Measurements not available

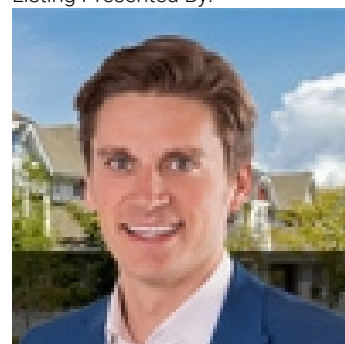
Kitchen Measurements not available

Primary Bedroom 3.02 m X 4.14 m

Bedroom 2 3.6 m X 3.32 m

Bedroom 3 3.05 m X 2.8 m

Listing Presented By:



Originally Listed by:
Royal LePage Noralta Real Estate

<https://tysonmoroz.com/>



CREA

DDF

#230, 70 Mcleod Ave , Spruce Grove, AB,

Phone: 780-920-0550
tyson@royallepage.ca

The property information on this website is derived from the Canadian Real Estate Association's Data Distribution Facility (DDF®). DDF® references real estate listings held by various brokerage firms and franchisees. The accuracy of information is not guaranteed and should be independently verified. The trademarks REALTOR®, REALTORS® and the REALTOR® logo are controlled by The Canadian Real Estate Association (CREA) and identify real estate professionals who are members of CREA. The trademarks MLS®, Multiple Listing Service® and the associated logos are owned by CREA and identify the quality of services provided by real estate professionals who are members of CREA.