



Spruce Grove Alberta

\$535,000

IMMACULATE HOME WITH OVER SIZED GARAGE IN SOUGHT AFTER NEIGHBORHOOD. Featuring A/C, 9' ceilings on main & upper floor plus 11' ceilings in the BONUS ROOM. Comes w/hardwood, tile, blinds, gas fireplace, wrought iron rod railings, pot lights & massive windows throughout. Bright, spacious kitchen featuring extra cabinet space, granite counters, two tone finish, under mount sinks & stainless steel appliances. The open concept main floor includes a spacious mud room/laundry room off the garage entrance. Upstairs includes 3 bedrooms w/master bedroom featuring 5pc ensuite w/a tile surround shower, dual sinks, large corner tub & a great walk in closet. The lots in Stoneshire are larger & wider then similar priced homes in nearby communities. Located close to The Links Golf course, walking distance from schools, parks & shopping w/easy access to Yellowhead HWY for convenient trips into the city of Edmonton. Outside features an upgraded exposed aggregate driveway, spacious & functional yard. Just move in & unpack. (id:6769)

Living room Measurements not available

Kitchen Measurements not available

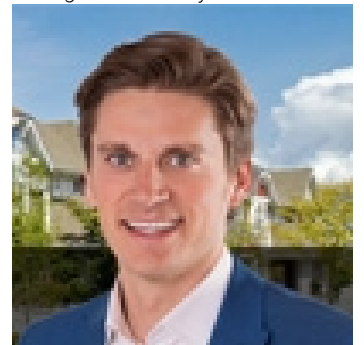
Primary Bedroom Measurements not available

Bedroom 2 Measurements not available

Bedroom 3 Measurements not available

Bonus Room Measurements not available

Listing Presented By:



Originally Listed by:
Royal LePage Noralta Real Estate

<https://tysonmoroz.com/>



CREA

DDF

#230, 70 Mcleod Ave , Spruce Grove, AB,

Phone: 780-920-0550
tyson@royallepage.ca

The property information on this website is derived from the Canadian Real Estate Association's Data Distribution Facility (DDF®). DDF® references real estate listings held by various brokerage firms and franchisees. The accuracy of information is not guaranteed and should be independently verified. The trademarks REALTOR®, REALTORS® and the REALTOR® logo are controlled by The Canadian Real Estate Association (CREA) and identify real estate professionals who are members of CREA. The trademarks MLS®, Multiple Listing Service® and the associated logos are owned by CREA and identify the quality of services provided by real estate professionals who are members of CREA.