



Rural Parkland County Alberta

\$3,200,000

Stunning multi-building lakefront estate on Wabamun Lake, offering three residences across two prime lots with panoramic lake views and an extensive investment in landscaping design. This private, fenced, and gated property features approximately 5600 sq ft of total living space across three residences, plus 2800 sq ft luxury workshop space across two shops—all crafted with top-tier finishes. Ideal for large families, a bed-and-breakfast, or grand entertaining, it includes 9 bedrooms across the main house and two guesthouses. Highlights include real quarry stone accents, a custom irrigation system, in-floor heating throughout, expansive custom cabinetry in every space, timber frame accents, a premium indoor and outdoor sound system, poly floors in shops, fully fenced yard, docks, dual cisterns, dual holding tanks and a professionally engineered beachfront for ultimate lake enjoyment. Furniture is included (may differ from photos). Price includes lots 8 & 9. Shop 1(56' x 28') Shop 2 (36 x 26') (id:6769)

Family room 4.3 m X 8.54 m

Bedroom 3 3.51 m X 4.24 m

Bedroom 4 3.72 m X 3.99 m

Living room 7.35 m X 5.58 m

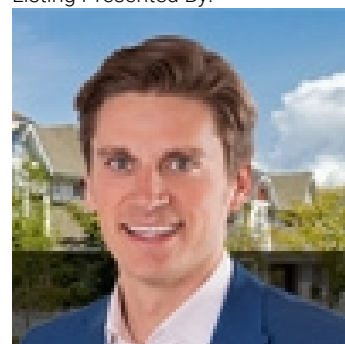
Dining room 5.21 m X 3.08 m

Kitchen 3.99 m X 5.21 m

Primary Bedroom 4.11 m X 5.39 m

Bedroom 2 3.87 m X 3.08 m

Listing Presented By:



Originally Listed by:
Royal LePage Noralta Real Estate

<https://tysonmoroz.com/>



CREA

DDF

#230, 70 Mcleod Ave , Spruce Grove, AB,

Phone: 780-920-0550
tyson@royallepage.ca

The property information on this website is derived from the Canadian Real Estate Association's Data Distribution Facility (DDF®). DDF® references real estate listings held by various brokerage firms and franchisees. The accuracy of information is not guaranteed and should be independently verified. The trademarks REALTOR®, REALTORS® and the REALTOR® logo are controlled by The Canadian Real Estate Association (CREA) and identify real estate professionals who are members of CREA. The trademarks MLS®, Multiple Listing Service® and the associated logos are owned by CREA and identify the quality of services provided by real estate professionals who are members of CREA.