



## Rural Parkland County Alberta

\$690,000

Welcome to Willow Peak Park in the Village of Spring Lake! Mature ACREAGE on 1.16 acres treed/landscaped w/power gate featuring spacious WALKOUT 4bed|3bath BI-LEVEL w/MOTHER IN LAW Suite! Bright open concept throughout main featuring high vaulted ceilings & hardwood flrs w/spacious foyer & massive kitchen/living/dining space w/tons of cabinet/cntr space, all appliances, pantry, & gas FP. Master suite w/5pce ensuite, lrg 2nd bedrm, 4pc bath & laundry rm finishes the main flr. WALKOUT basement features a huge MOTHER IN LAW suite w/full kitchen, woodstove, laundry, TWO more beds & 4pce bath. GREAT VIEWS w/East facing upper & lower covered decks PLUS front porch views facing sunset West. TRIPLE attached garage measures 25'x30' w/garage heater & an 8'x10' door. HUGE paved driveway; RV power hookup & parking. Additional features: backup generator, in flr heating, A/C, central vac, TWO sheds & Tarp Shelter. Minutes to Stony Plain/Spruce Grove & Blueberry k-9 school. Walking distance to Spring Lake & playground. (id:6769)

Bedroom 3 3.44 m X 3.26 m

Bedroom 4 3.26 m X 2.78 m

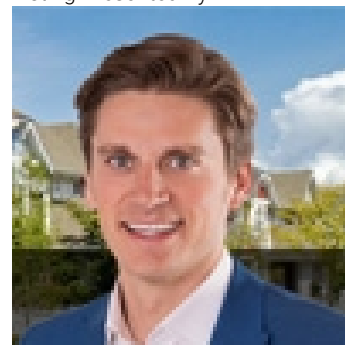
Laundry room Measurements not available

Primary Bedroom 3.69 m X 5.21 m

Bedroom 2 3.81 m X 3.81 m

Laundry room Measurements not available

Listing Presented By:



Originally Listed by:  
Royal LePage Noralta Real Estate

<https://tysonmoroz.com/>



CREA

DDF

#230, 70 Mcleod Ave , Spruce Grove, AB,

Phone: 780-920-0550  
[tyson@royallepage.ca](mailto:tyson@royallepage.ca)

The property information on this website is derived from the Canadian Real Estate Association's Data Distribution Facility (DDF®). DDF® references real estate listings held by various brokerage firms and franchisees. The accuracy of information is not guaranteed and should be independently verified. The trademarks REALTOR®, REALTORS® and the REALTOR® logo are controlled by The Canadian Real Estate Association (CREA) and identify real estate professionals who are members of CREA. The trademarks MLS®, Multiple Listing Service® and the associated logos are owned by CREA and identify the quality of services provided by real estate professionals who are members of CREA.