

Edmonton Alberta

\$184,900

Step into modern comfort with this stunning 2-bedroom, 2-bathroom condo that offers both style and convenience. Featuring an open-concept layout with soaring 9-foot ceilings, this bright and airy home is designed for effortless living. The spacious kitchen boasts sleek appliances, ample cabinetry, and a breakfast bar—perfect for entertaining guests or enjoying your morning coffee. Both bedrooms are generously sized, with the primary bedroom featuring a walk-through closet and a private ensuite. The second bedroom is ideal for guests, a home office, or a growing family. Additional perks include in-suite laundry, two underground parking stalls, and storage cage. Located in a pet-friendly complex, this home is just steps from shopping, groceries, dining, schools, and public transportation, including the LRT—making commuting and daily errands effortless. This is a fantastic opportunity to own a stylish and functional home in a prime location. Condo fees include heat, water, and power. Don't miss out! (id:6769)

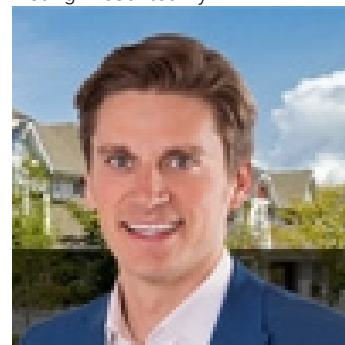
Living room 5.58 m X 3.47 m

Kitchen 2.54 m X 2.48 m

Primary Bedroom 3.94 m X 3.47 m

Bedroom 2 4.05 m X 3.42 m

Listing Presented By:



Originally Listed by:
RE/MAX Elite

<https://erickyip.com/>



Royal

Le Page Noralta Spruce Grove

#230, 70 Mcleod Ave , Spruce
Grove, AB,

Phone: 780-920-0550

Fax:

tyson@royalpage.ca

The property information on this website is derived from the Canadian Real Estate Association's Data Distribution Facility (DDF®). DDF® references real estate listings held by various brokerage firms and franchisees. The accuracy of information is not guaranteed and should be independently verified. The trademarks REALTOR®, REALTORS® and the REALTOR® logo are controlled by The Canadian Real Estate Association (CREA) and identify real estate professionals who are members of CREA. The trademarks MLS®, Multiple Listing Service® and the associated logos are owned by CREA and identify the quality of services provided by real estate professionals who are members of CREA.