



St. Albert Alberta

\$388,000

End unit in Heritage Lane! Private backyard and side yard onto greenbelt and the Red Willow Park trail system. Extra wide driveway ideal for second vehicle. Bareland condo with low fees of \$93 per month. Inviting half-duplex with one the largest yards in the complex! This spacious 1334 square foot 3 bedroom + 2.5 bathrooms. The main floor features a u-shaped kitchen with ample cupboard space and a breakfast bar, a dining room with patio door to a deck and west facing backyard. The bright living room features a gas fireplace. There is a 2-piece bathroom off the entrance plus direct access into the attached garage. Upstairs you'll find 3 bedrooms and 2 full bathrooms, including a spacious primary with beautiful views, a RARE 3-piece ensuite and a spacious walk-in closet. The finished basemate has a family room as well as storage space and a laundry room. Heritage Lakes is St. Albert's southernmost community with easy access to all commuter routes. (id:6769)

Family room 5.6 m X 5.3 m

Laundry room Measurements not available

Living room 5.1 m X 2.7 m

Dining room 3.5 m X 3 m

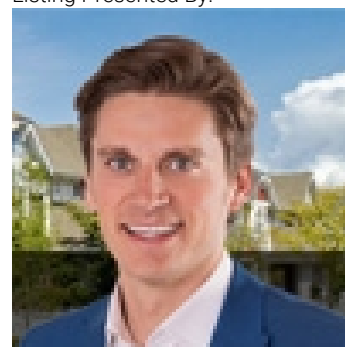
Kitchen 3.7 m X 2.7 m

Primary Bedroom 4.7 m X 3.7 m

Bedroom 2 4.8 m X 2.9 m

Bedroom 3 3.4 m X 2.7 m

Listing Presented By:



Originally Listed by:
RE/MAX Elite

<http://www.calldale4asale.com/>



Royal

Le Page Noralta Spruce Grove

#230, 70 Mcleod Ave , Spruce
Grove, AB,

Phone: 780-920-0550

Fax:

tyson@royallepage.ca

The property information on this website is derived from the Canadian Real Estate Association's Data Distribution Facility (DDF®). DDF® references real estate listings held by various brokerage firms and franchisees. The accuracy of information is not guaranteed and should be independently verified. The trademarks REALTOR®, REALTORS® and the REALTOR® logo are controlled by The Canadian Real Estate Association (CREA) and identify real estate professionals who are members of CREA. The trademarks MLS®, Multiple Listing Service® and the associated logos are owned by CREA and identify the quality of services provided by real estate professionals who are members of CREA.