

Sherwood Park Alberta

\$439,900

Welcome to this enchanting and inviting home located in a quiet culdesac, walking distance to Brentwood Elementary and Sal Comp. This home has been lovingly maintained throughout the years, which is evident both inside and outside. Upon entering the home, you will find the cozy living room, a central kitchen which is open to the dining area, complete with a corner gas fireplace perfect for entertaining. Completing the main floor you will find the master suite which features dual closets and a flex room off the master. The perfect meditation space, dressing room, sitting room or even home office, a second bedroom and a 4 pce bathroom. The fully finished basement has a large family room/ bar area, a 3rd bedroom, a 3 pce bathroom and laundry area. Updates done over the years SHINGLES, WINDOWS, FACIA and EAVES, SIDEWALKS AND DRIVEWAY, ALL TRIM AND BASEBOARDS and DOORS, FLOORING, DECK. Completing this package is a large private backyard, an oversized single attached garage, and 2 large storage sheds. (id:6769)

Bedroom 3 3.61 m X 3.02 m

Second Kitchen 3.83 m X 3.8 m

Laundry room 3.73 m X 2.86 m

Recreation room 3.5 m X 5.37 m

Utility room 1.83 m X 3.2 m

Living room 4.17 m X 4.94 m

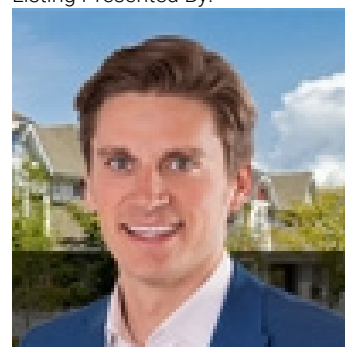
Dining room 3.47 m X 4.02 m

Kitchen 3.42 m X 5.11 m

Primary Bedroom 3.59 m X 3.41 m

Bedroom 2 3.14 m X 3.79 m

Listing Presented By:



Originally Listed by:
Royal LePage Prestige Realty



CREA

DDF

#230, 70 Mcleod Ave , Spruce
Grove, AB,

Phone: 780-920-0550
tyson@royallepage.ca

The property information on this website is derived from the Canadian Real Estate Association's Data Distribution Facility (DDF®). DDF® references real estate listings held by various brokerage firms and franchisees. The accuracy of information is not guaranteed and should be independently verified. The trademarks REALTOR®, REALTORS® and the REALTOR® logo are controlled by The Canadian Real Estate Association (CREA) and identify real estate professionals who are members of CREA. The trademarks MLS®, Multiple Listing Service® and the associated logos are owned by CREA and identify the quality of services provided by real estate professionals who are members of CREA.