



Leduc Alberta

\$599,900

BETTER THAN NEW! This well appointed 2-storey home is located in the popular neighborhood of Tribute and offers over 3300 sqft of total living space. The main floor features a bright and open floor plan, hardwood flooring, lavish kitchen w/s.s. appliances, premium cabinetry, and granite counters. Spacious living area w/beautiful tiled gas fireplace, good dining space, main floor den, walk-through pantry, full bath, and laundry/mudroom. Upstairs you will find the large primary suite w/5-pc ensuite and walk-in closet, 3 additional good sized bedrooms, 4-pc bath, and awesome bonus area. The FULLY FINISHED lower level features a separate entrance to outside, huge rec room, 5th bedroom, full bath, and plenty of storage space. Outside you will enjoy the fully fenced/landscaped yard w/large two-tiered deck. Close to schools, shopping, and other amenities. Great family home in an awesome family area! (id:6769)

Family room 7.87 m X 6.5 m

Bedroom 5 4.06 m X 3.64 m

Living room 4.65 m X 4.31 m

Dining room 3.58 m X 2.94 m

Kitchen 3.58 m X 3.75 m

Den 3.04 m X 3.02 m

Laundry room 1.82 m X 2.02 m

Primary Bedroom 4.85 m X 3.95 m

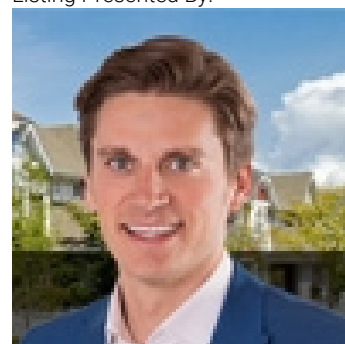
Bedroom 2 3.63 m X 3.03 m

Bedroom 3 3.63 m X 3.03 m

Bedroom 4 3.24 m X 3.17 m

Bonus Room 4.46 m X 4.4 m

Listing Presented By:



Originally Listed by:
RE/MAX Elite

<http://ryanlauber.com/>



CREA

DDF

#230, 70 Mcleod Ave , Spruce
Grove, AB,

Phone: 780-920-0550
tyson@royallepage.ca

The property information on this website is derived from the Canadian Real Estate Association's Data Distribution Facility (DDF®). DDF® references real estate listings held by various brokerage firms and franchisees. The accuracy of information is not guaranteed and should be independently verified. The trademarks REALTOR®, REALTORS® and the REALTOR® logo are controlled by The Canadian Real Estate Association (CREA) and identify real estate professionals who are members of CREA. The trademarks MLS®, Multiple Listing Service® and the associated logos are owned by CREA and identify the quality of services provided by real estate professionals who are members of CREA.