



Fort Saskatchewan Alberta

\$749,900

Quick Possession!!! Introducing this stunning RV triple-garage home, perfect for any growing family! Upon entry, you'll immediately be struck by the open-to-above design that radiates elegance and sophistication. Boasting 4 spacious bedrooms, there's no shortage of room to accommodate your family and guests. And, for those times when you need some extra space, the bonus room provides the perfect escape or play area for the kids. But, let's talk about that master bedroom ensuite! A deluxe 6-piece design with every inch meticulously crafted to keep you feeling like royalty. Imagine soaking in the standalone tub or enjoying the spa-like shower before wrapping up in a plush towel. Simply heavenly! Located in a private cul-de-sac on a spacious 40 pocket lot, you'll have all the privacy you need while still being part of this welcoming community. And, best of all, this move-in ready house has everything you need, so come and make it your forever home today! (id:6769)

Bedroom 5 Measurements not available

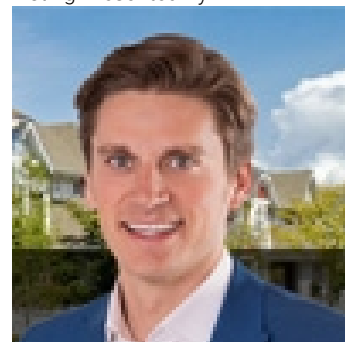
Primary Bedroom Measurements not available

Bedroom 2 Measurements not available

Bedroom 3 Measurements not available

Bedroom 4 Measurements not available

Listing Presented By:



Originally Listed by:
Royal LePage Noralta Real Estate



CREA

DDF

#230, 70 Mcleod Ave , Spruce
Grove, AB,

Phone: 780-920-0550
tyson@royallepage.ca

The property information on this website is derived from the Canadian Real Estate Association's Data Distribution Facility (DDF®). DDF® references real estate listings held by various brokerage firms and franchisees. The accuracy of information is not guaranteed and should be independently verified. The trademarks REALTOR®, REALTORS® and the REALTOR® logo are controlled by The Canadian Real Estate Association (CREA) and identify real estate professionals who are members of CREA. The trademarks MLS®, Multiple Listing Service® and the associated logos are owned by CREA and identify the quality of services provided by real estate professionals who are members of CREA.