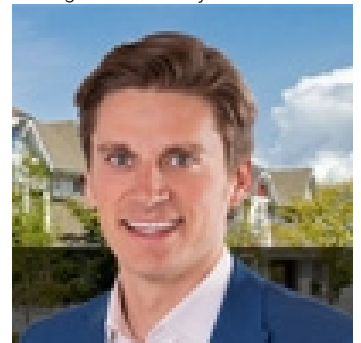


Edmonton Alberta

\$25

Newly Renovated 1620 Main floor space for lease. Plenty of parking. Refinished exterior and interior. Excellent signage opportunities. Space perfect for retail, health, fitness, medical, personal, business and office services. Zoning - CB2 Ready for immediate possession (id:6769)

Listing Presented By:



Originally Listed by:
RE/MAX Elite

<http://www.koshyc.com/>



CREA

DDF

#230, 70 Mcleod Ave , Spruce
Grove, AB,

Phone: 780-920-0550
tyson@royallepage.ca

The property information on this website is derived from the Canadian Real Estate Association's Data Distribution Facility (DDF®). DDF® references real estate listings held by various brokerage firms and franchisees. The accuracy of information is not guaranteed and should be independently verified. The trademarks REALTOR®, REALTORS® and the REALTOR® logo are controlled by The Canadian Real Estate Association (CREA) and identify real estate professionals who are members of CREA. The trademarks MLS®, Multiple Listing Service® and the associated logos are owned by CREA and identify the quality of services provided by real estate professionals who are members of CREA.