



## Edmonton Alberta

\$1,649,000

Presitgous custom built, executive bungalow backs onto ravine. Unique quality throughout from soaring vaulted ceilings to the hand carved Mediterranean limestone fireplace , Hardwood throughout the main floor and carpeting on lower level. Gourmet island kitchen with top of the line appliances. Primary main floor bedroom boast a cozy fireplace, custom walk in closet and a huge ensuite with a double walk thru shower. Spacious floor plan includes private suite above garage, a total of 5 bedroom & 5 bathrooms and fully developed WALKOUT basement. Lower level has huge family room which faces ravine and opens to a sunny patio, a multi tiered theatre room, primary bedroom with ensuite and an additional bedroom & bathroom. Gorgeous private yard with stunning landscaping, home exterior has imported Mediterranean natural limestone, custom medal entry doors , custom walk-in maple master closet . This home was designed with elegance and a very welcoming living atmosphere. Stunning home!!!! (id:6769)

Family room 10.63 m X 5.21 m

Bedroom 4 4.44 m X 5.3 m

Bedroom 5 4.89 m X 4.75 m

Media 6.75 m X 5.53 m

Living room 5.51 m X 4.4 m

Dining room 3.49 m X 3.64 m

Kitchen 6.38 m X 3.78 m

Primary Bedroom 5.49 m X 4.77 m

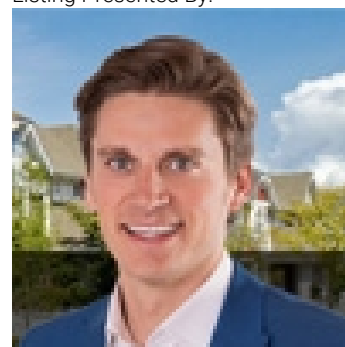
Bedroom 2 3.64 m X 3.32 m

Breakfast 2.98 m X 5.3 m

Laundry room 3.53 m X 1.84 m

Bedroom 3 5.77 m X 5.1 m

Listing Presented By:



Originally Listed by:  
RE/MAX Elite

<http://www.nadiaoaman.com/>



Royal

**Le Page Noralta Spruce Grove**

#230, 70 Mcleod Ave , Spruce  
Grove, AB,

Phone: 780-920-0550

Fax:

tyson@royalpage.ca

The property information on this website is derived from the Canadian Real Estate Association's Data Distribution Facility (DDF®). DDF® references real estate listings held by various brokerage firms and franchisees. The accuracy of information is not guaranteed and should be independently verified. The trademarks REALTOR®, REALTORS® and the REALTOR® logo are controlled by The Canadian Real Estate Association (CREA) and identify real estate professionals who are members of CREA. The trademarks MLS®, Multiple Listing Service® and the associated logos are owned by CREA and identify the quality of services provided by real estate professionals who are members of CREA.