



Edmonton Alberta

\$269,900

It's all about lifestyle & Freedom. Truly a Winner!! Beautiful 2 bed, 2 bath main floor condo at a super quiet location in the complex. Feels just like a detached bungalow with over 1,100 Sq. Ft. of Spacious, Open living! Perfectly maintained and clean, with easy access to the exterior if you have a pet or just to enjoy the outside fresh air & sunshine. The elevator, the many amenities, and grabbing your mail are so convenient. Upgrades include new luxury vinyl plank flooring, interior paint, furnace motor, ++. You are guaranteed to be impressed by this one! Includes 1 titled underground parking stall with a storage cage as well. This Complex has incredibly good access to the Henday, Terwilligar Dr., 23 Ave., and other surrounding roadways! The building feels so homey, clean, and quiet with fantastic amenities, including a car wash, lounge/social room with kitchen area, gym, guest suite, theatre room, A/C and LOTS of close visitor parking! It's an extremely popular Complex! You have to check it out! (id:6769)

Living room 4.74 m X 5.76 m

Dining room 2.82 m X 3.49 m

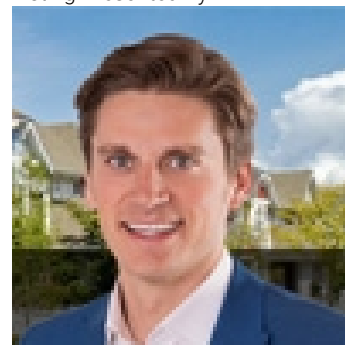
Kitchen 2.92 m X 3.49 m

Primary Bedroom 3.41 m X 7.18 m

Bedroom 2 3.42 m X 4.06 m

Laundry room 2.39 m X 1.63 m

Listing Presented By:



Originally Listed by:
RE/MAX Elite

<http://www.valread.com/>



**Royal
Le Page Noralta Spruce Grove**

#230, 70 Mcleod Ave , Spruce
Grove, AB,

Phone: 780-920-0550
Fax:
tyson@royallepage.ca

The property information on this website is derived from the Canadian Real Estate Association's Data Distribution Facility (DDF®). DDF® references real estate listings held by various brokerage firms and franchisees. The accuracy of information is not guaranteed and should be independently verified. The trademarks REALTOR®, REALTORS® and the REALTOR® logo are controlled by The Canadian Real Estate Association (CREA) and identify real estate professionals who are members of CREA. The trademarks MLS®, Multiple Listing Service® and the associated logos are owned by CREA and identify the quality of services provided by real estate professionals who are members of CREA.