



Edmonton Alberta

\$210,000

Welcome to this Spacious FULLY RENOVATED 2013 built, main floor 2 BEDROOM, 2 BATH, 2 TITLED parking stall unit located in the beautiful complex of Elements at Laurel Crossing. This home has been full renovated and features FRESH PAINT, QUARTZ COUNTERTOPS, CABINETS upto the CEILING, Undermount Sinks, New Faucets and includes private yard and green space for your own personal enjoyment. This beautiful property caters to the youth, middle age, and elderly folk with it's open concept floor plan, centered island with double sink, in-suite storage, in-suite laundry, custom built-in office shelving with MURPHY Double size wall bed, and large Primary bedroom with walk-through closet and 4 piece bathroom. Enjoy the luxuries of one U/G PARKING STALL, one ABOVE GROUND parking stall, along visitor parking for your friends and family. This complex is perfectly located near schools, shopping, and public transportation for your convenience. (id:6769)

Living room Measurements not available

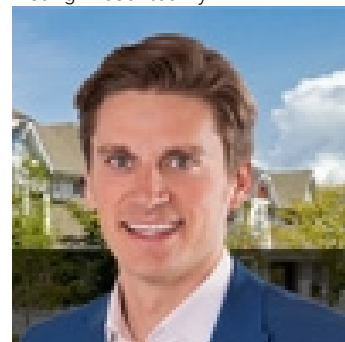
Dining room Measurements not available

Kitchen Measurements not available

Primary Bedroom Measurements not available

Bedroom 2 Measurements not available

Listing Presented By:



Originally Listed by:
RE/MAX Elite

<http://parveen.ca/>



CREA

DDF

#230, 70 Mcleod Ave , Spruce
Grove, AB,

Phone: 780-920-0550
tyson@royallepage.ca

The property information on this website is derived from the Canadian Real Estate Association's Data Distribution Facility (DDF®). DDF® references real estate listings held by various brokerage firms and franchisees. The accuracy of information is not guaranteed and should be independently verified. The trademarks REALTOR®, REALTORS® and the REALTOR® logo are controlled by The Canadian Real Estate Association (CREA) and identify real estate professionals who are members of CREA. The trademarks MLS®, Multiple Listing Service® and the associated logos are owned by CREA and identify the quality of services provided by real estate professionals who are members of CREA.