



Edmonton Alberta

\$199,800

Original owner!!! As soon as you walk in you will love the open floor plan, and the 9' ceilings. The kitchen has plenty of cupboards, counter space, and breakfast bar, great for morning coffee and family visits. Dining area is spacious and great for entertaining. The large living room has 2 windows as well as garden door with phantom screen to the patio. Primary bedroom is a generous size with a walk-in closet, access to the 4 piece bathroom as well as garden door to patio. You'll love the location, close to Magrath park & just steps from Whitemud Creek trails, shopping & restaurants. Many upgrades throughout including, fridge, dishwasher, washer, dryer, light fixtures and recently painted throughout. Move in ready!! A must to see! (id:6769)

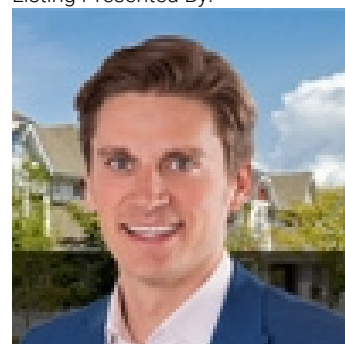
Living room 4.46 m X 4.62 m

Dining room 2.59 m X 2.91 m

Kitchen 2.942.76

Primary Bedroom 4.15 m X 3.55 m

Listing Presented By:



Originally Listed by:
RE/MAX Elite

<http://www.alangee.com/>



Royal

Le Page Noralta Spruce Grove

#230, 70 Mcleod Ave , Spruce
Grove, AB,

Phone: 780-920-0550

Fax:

tyson@royallepage.ca

The property information on this website is derived from the Canadian Real Estate Association's Data Distribution Facility (DDF®). DDF® references real estate listings held by various brokerage firms and franchisees. The accuracy of information is not guaranteed and should be independently verified. The trademarks REALTOR®, REALTORS® and the REALTOR® logo are controlled by The Canadian Real Estate Association (CREA) and identify real estate professionals who are members of CREA. The trademarks MLS®, Multiple Listing Service® and the associated logos are owned by CREA and identify the quality of services provided by real estate professionals who are members of CREA.