



Edmonton Alberta

\$359,900

MODERN LUXURY 2 BED 2 BATH CONDO WITH 2 TITLED UNDERGROUND PARKING STALLS & TITLED STORAGE UNIT! STEPS TO CENTURY PARK LRT! This upgraded main floor unit boasts massive windows, loads of natural light, gas range, granite counter tops, stainless steel appliances, modern finishes, open concept, 9 ft ceilings, 2 large bedrooms, 2 full bathrooms (including a 5pc spa like ensuite with soaker tub), in-suite laundry, AND AN OVER 900SQFT PATIO! This is truly a one of a kind unit! It's not often you can grow a garden, entertain, and bbq on the patio of your very own condo! This is a solid CONCRETE CONSTRUCTION building that has many amenities including an exercise room! This LOCATION is perfect unit for easy access to all amenities and easy commute to downtown, U of A or any of the LRT stops! ALL UTILITIES, INTERNET and AMENITIES INCLUDED WITHIN THE CONDO FEE! (id:6769)

Living room Measurements not available

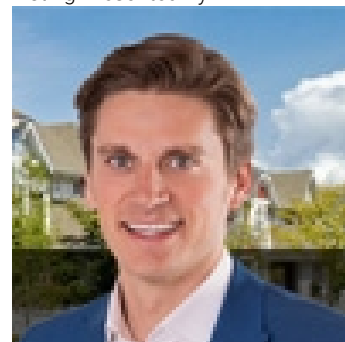
Dining room Measurements not available

Kitchen Measurements not available

Primary Bedroom Measurements not available

Bedroom 2 Measurements not available

Listing Presented By:



Originally Listed by:
MaxWell Progressive

<http://www.keithmadsengroup.com/>



Royal

Le Page Noralta Spruce Grove

#230, 70 Mcleod Ave , Spruce Grove, AB,

Phone: 780-920-0550

Fax:

tyson@royallepage.ca

The property information on this website is derived from the Canadian Real Estate Association's Data Distribution Facility (DDF®). DDF® references real estate listings held by various brokerage firms and franchisees. The accuracy of information is not guaranteed and should be independently verified. The trademarks REALTOR®, REALTORS® and the REALTOR® logo are controlled by The Canadian Real Estate Association (CREA) and identify real estate professionals who are members of CREA. The trademarks MLS®, Multiple Listing Service® and the associated logos are owned by CREA and identify the quality of services provided by real estate professionals who are members of CREA.