



Edmonton Alberta

\$439,000

Newly renovated 2 storey with walking distance to Keheewin elementary school. Bright and clean. Freshly painted. Brand new shingles. Newer hot water tank. Hardwood floor on main. Ceramic tiles at front and at rear entrance. Sunny living room with brand new picture window. Most of the rest windows replaced in 2019. Open kitchen with newer white lacquered cabinet panels. Cozy family room with gas fireplace. Main floor also comes with 2 pcs bath. Upstairs features 3 bedrooms and 4 pcs bath. Spacious primary bedroom with walk in closet and 3 pcs bath with new vanity sink. 4 pcs bath renovated with ceramic tiled wall from bathtub to ceiling and new vanity sink. Basement is fully finished with recreation room, den/office with 3 pcs bath. Fully fenced backyard with brick and concrete patio. 20 x 20' double detached garage. Great location. Close to school, park, playground, bus, shops, YMCA and easy access to Century LRT. Seller to provide title insurance in lieu of real property report. Quick possession. (id:6769)

Den 4.2 m X 3.1 m

Recreation room 6.9 m X 3.1 m

Laundry room 2 m X 5.1 m

Living room 4.1 m X 3.7 m

Dining room 3.5 m X 3.3 m

Kitchen 5.6 m X 2.8 m

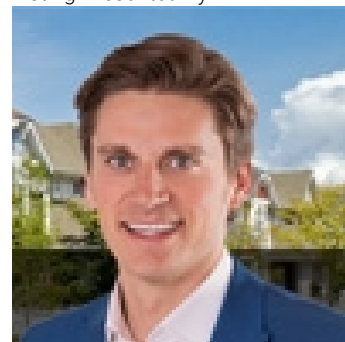
Family room 4.7 m X 4.1 m

Primary Bedroom 4.4 m X 4.3 m

Bedroom 2 3.5 m X 2.4 m

Bedroom 3 3.4 m X 2.8 m

Listing Presented By:



Originally Listed by:
RE/MAX Elite

<http://www.stephenyip.com/>



CREA

DDF

#230, 70 Mcleod Ave , Spruce
Grove, AB,

Phone: 780-920-0550
tyson@royallepage.ca

The property information on this website is derived from the Canadian Real Estate Association's Data Distribution Facility (DDF®). DDF® references real estate listings held by various brokerage firms and franchisees. The accuracy of information is not guaranteed and should be independently verified. The trademarks REALTOR®, REALTORS® and the REALTOR® logo are controlled by The Canadian Real Estate Association (CREA) and identify real estate professionals who are members of CREA. The trademarks MLS®, Multiple Listing Service® and the associated logos are owned by CREA and identify the quality of services provided by real estate professionals who are members of CREA.