



## Edmonton Alberta

\$625,000

ROOFTOP PATIO! TERRIFIC LOCATION! BONUS ROOM! IMMEDIATE POSSESSION! Searching for a newer infill property? This space is perfect for your growing family or working professionals! This 2036 sq ft 2 bed, 2.5 bath duplex has been well maintained & shows wonderfully. Open concept main floor flows well, w/ hardwood & tile flooring, double sided gas fireplace, stunning kitchen w/ granite countertops & massive island, S/S appliances, & 2 pce bath. The second level is home to DUEL PRIMARY bedrooms, each with massive bedrooms, walk in closet, and 4 pce bath! Your top floor is home to the bonus room / loft for additional living space or home office, alongside the rooftop patio for enjoying summer evenings with friends, while viewing the city skyline. Unfinished basement with SEPARATE SIDE ENTRY allows for future bedroom, rec room, or LEGAL SUITE development with a large footprint to work with. Double detached garage w/ wood deck, maintenance free stone & turf make upkeep a breeze! Call Forest Heights home today! (id:6769)

Living room 4.4 m X 5.57 m

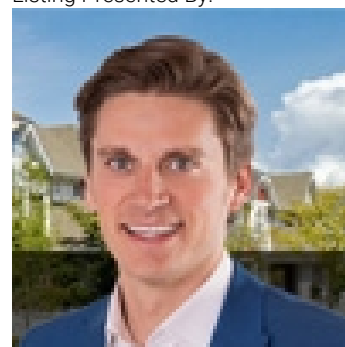
Dining room 4.39 m X 3.45 m

Kitchen 4.96 m X 3.65 m

Primary Bedroom 5.25 m X 4.6 m

Bedroom 2 4.01 m X 4.12 m

Listing Presented By:



Originally Listed by:  
RE/MAX Elite

<http://kevindoyle.remax.ca/>



Royal

**Le Page Noralta Spruce Grove**

#230, 70 Mcleod Ave , Spruce Grove, AB,

Phone: 780-920-0550

Fax:

[tyson@royalpage.ca](mailto:tyson@royalpage.ca)

The property information on this website is derived from the Canadian Real Estate Association's Data Distribution Facility (DDF®). DDF® references real estate listings held by various brokerage firms and franchisees. The accuracy of information is not guaranteed and should be independently verified. The trademarks REALTOR®, REALTORS® and the REALTOR® logo are controlled by The Canadian Real Estate Association (CREA) and identify real estate professionals who are members of CREA. The trademarks MLS®, Multiple Listing Service® and the associated logos are owned by CREA and identify the quality of services provided by real estate professionals who are members of CREA.