



Edmonton Alberta

\$149,900

COMFORTABLE and CONVENIENT! 1 TITLED Parking Stall! Very open, clean and cozy feeling impressive Unit, situated at a quiet end of the hall with quick access to the exterior if you have a pet or want to go for a walk. Very well maintained, showing pride of ownership! Enjoy the open and large kitchen, the private patio for fresh air and your own titled parking right outside the main door! Extremely good-sized Social Room to utilize for larger get togethers and a Huge Bonus of a Pet Area on the exterior for that furry family member, if needed. Extra Bonus of 2 nice-quality vending machines with drinks & snacks in the lobby right by the social room to treat yourself and your guests! Access is fantastic to commuter routes such as Ellerslie Rd., Calgary Trail, 50th St, the Henday and more options. Good visitor parking close to the main doors also. Unbeatable price to move in and call it your own or as a great investment to rent out!! (id:6769)

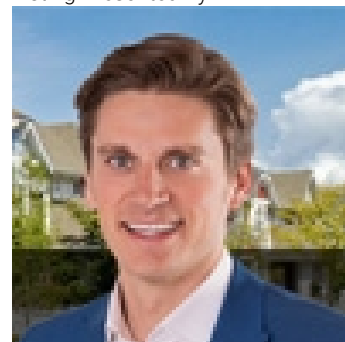
Living room 4.45 m X 6.22 m

Kitchen 3.16 m X 3.71 m

Primary Bedroom 3.15 m X 3.67 m

Laundry room 2.5 m X 1.91 m

Listing Presented By:



Originally Listed by:
RE/MAX Elite

<http://www.valread.com/>



Royal

Le Page Noralta Spruce Grove

#230, 70 Mcleod Ave , Spruce
Grove, AB,

Phone: 780-920-0550

Fax:

tyson@royalpage.ca

The property information on this website is derived from the Canadian Real Estate Association's Data Distribution Facility (DDF®). DDF® references real estate listings held by various brokerage firms and franchisees. The accuracy of information is not guaranteed and should be independently verified. The trademarks REALTOR®, REALTORS® and the REALTOR® logo are controlled by The Canadian Real Estate Association (CREA) and identify real estate professionals who are members of CREA. The trademarks MLS®, Multiple Listing Service® and the associated logos are owned by CREA and identify the quality of services provided by real estate professionals who are members of CREA.