



## Edmonton Alberta

\$150,000

Nestled in a serene setting, this peaceful 1-bedroom apartment offers a tranquil escape with a private patio that opens to lush green space ideal for pets & nature lovers. Step inside to find brand-new carpets & fresh paint, giving the space a new, fresh feel. The bedroom features a convenient cheater door to the bathroom, offering the luxury of an ensuite without the extra cleaning. The open kitchen includes an eating bar, perfect for chatting with guests or enjoying a quick meal. Enjoy the comfort of heated underground parking, complete with the parkade's largest stall, perfect for a car & motorcycle. The storage locker, free of obstructing vehicles, allows easy access with its wide-open door swing. This quiet apartment not only offers soothing retreat but also places you within walking distance of every convenience. Enjoy quick access to shopping, restaurants, banks, bus & LRT all within walking distance making commuting a breeze! The best of both worlds: serenity & accessibility all at the best price! (id:6769)

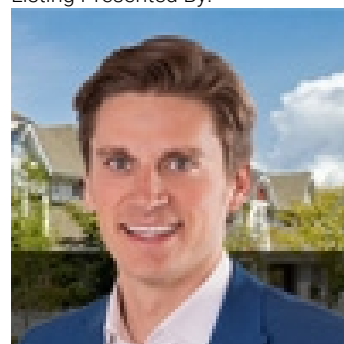
Living room 3.51 m X 3.25 m

Dining room 3.25 m X 3.24 m

Kitchen 4.29 m X 2.45 m

Primary Bedroom 4.32 m X 3.05 m

Listing Presented By:



Originally Listed by:  
RE/MAX Elite

<http://www.mindfulmoves.ca/>



CREA

DDF

#230, 70 McLeod Ave, Spruce Grove, AB,

Phone: 780-920-0550  
tyson@royallepage.ca

The property information on this website is derived from the Canadian Real Estate Association's Data Distribution Facility (DDF®). DDF® references real estate listings held by various brokerage firms and franchisees. The accuracy of information is not guaranteed and should be independently verified. The trademarks REALTOR®, REALTORS® and the REALTOR® logo are controlled by The Canadian Real Estate Association (CREA) and identify real estate professionals who are members of CREA. The trademarks MLS®, Multiple Listing Service® and the associated logos are owned by CREA and identify the quality of services provided by real estate professionals who are members of CREA.