



## Edmonton Alberta

\$198,800

INVESTOR ALERT, TAKE OVER LONG TERM TENANT PAYING \$1500/MONTH. Welcome to this spacious 927 sqft, 2bedroom, 2bathroom main floor condo, perfect for those seeking comfort and convenience! Conveniently located in Wild Rose, just off 17th STR, close to great shopping, amenities and the Anthony Henday. This sunny and bright corner unit features large windows and a wrap-around balcony, allowing for plenty of natural light. Youll appreciate the modern layout, with the added convenience of in-suite laundry and plenty of storage. Plus, your vehicle has a home too with the included titled parking stall. This condo is move-in ready and offers the perfect blend of indoor comfort and outdoor relaxationideal for first-time buyers, downsizers, or investors alike! (id:6769)

Living room Measurements not available

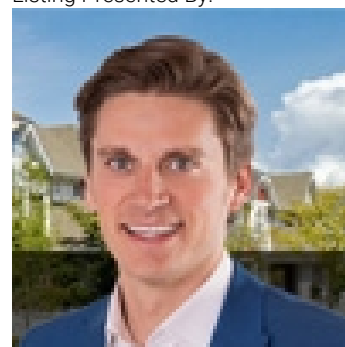
Dining room Measurements not available

Kitchen Measurements not available

Primary Bedroom Measurements not available

Bedroom 2 Measurements not available

Listing Presented By:



Originally Listed by:  
RE/MAX Elite

<https://www.victoriarempel.ca/>



CREA

DDF

#230, 70 Mcleod Ave , Spruce  
Grove, AB,

Phone: 780-920-0550  
tyson@royallepage.ca

The property information on this website is derived from the Canadian Real Estate Association's Data Distribution Facility (DDF®). DDF® references real estate listings held by various brokerage firms and franchisees. The accuracy of information is not guaranteed and should be independently verified. The trademarks REALTOR®, REALTORS® and the REALTOR® logo are controlled by The Canadian Real Estate Association (CREA) and identify real estate professionals who are members of CREA. The trademarks MLS®, Multiple Listing Service® and the associated logos are owned by CREA and identify the quality of services provided by real estate professionals who are members of CREA.