



## Edmonton Alberta

\$229,900

GORGEOUS UPGRADES, RAVINE AND FORESTS, SOUTH FACING, BEST PRICE! New professional paint and flooring. Spectacular location: just steps to the beautiful greenery/forests of the Mill Creek Ravine and close to Whyte Avenue with all the amenities to enjoy. Faces south always sunny and bright. Open and spacious floor plan, with gas fireplace. One bedroom, one den. Air conditioning for hot days. BEST PRICE IN CREEK SIDE. In-suite laundry/storage room. Guest suite. Heated underground titled parking stall #06, plus storage cage. Newly renovated exterior, shows beautiful and modern. Homecare available through Creek Side support services. Short walk to Ritchie retail outlets including ice cream shop, restaurant, etc. Many trails nearby. Was appraised by Frost Valuations in 2023 for \$265,000 (before paint and flooring upgrades). (id:6769)

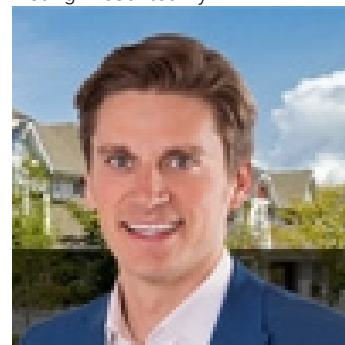
Living room 6.71 m X 5.4 m

Kitchen 2.89 m X 2.73 m

Den 2.72 m X 2.06 m

Primary Bedroom 5.38 m X 3.43 m

Listing Presented By:



Originally Listed by:  
RE/MAX Elite

<http://www.peterdschalin.com/>



CREA

DDF

#230, 70 Mcleod Ave , Spruce  
Grove, AB,

Phone: 780-920-0550  
tyson@royallepage.ca

The property information on this website is derived from the Canadian Real Estate Association's Data Distribution Facility (DDF®). DDF® references real estate listings held by various brokerage firms and franchisees. The accuracy of information is not guaranteed and should be independently verified. The trademarks REALTOR®, REALTORS® and the REALTOR® logo are controlled by The Canadian Real Estate Association (CREA) and identify real estate professionals who are members of CREA. The trademarks MLS®, Multiple Listing Service® and the associated logos are owned by CREA and identify the quality of services provided by real estate professionals who are members of CREA.