



Edmonton Alberta

\$350,000

Fabulous 1320 sq.ft. RARE ADULT BUNGALOW with a DOUBLE GARAGE & AC in HORIZON BEAUMARIS that BACKS BEAUMARIS LAKE & the 1.7 mile WALKING TRAILS that SURROUND it! Spacious 2 BEDROOM & it's been substantially UPGRADED & UPDATED recently including kitchen cabinets, stainless appliances, furnace, HWT, fresh neutral paint, lighting, carpets, toilets, mirrors, CUSTOM WINDOW COVERINGS, vanities, DRYWALL & luxury VINYL PLANK flooring IN THE BASEMENT as well. This spacious END UNIT offers PRIVACY & has plenty of GREENSPACE surrounding it. The foyer opens to a SUNLIT MAIN FLOOR with a spacious living room, the upgraded U-SHAPED KITCHEN has a breakfast nook, tons of cabinets with a counter perfect for a COFFEE CENTER, mega drawers plus a BI PANTRY. The FORMAL DINING ROOM offers PATIO DOOR access to the DECK surrounded by MATURE TREES and PRIVACY. The laundry, a 2nd. bedroom, a 4 pc. bath & the primary bedroom features a lovely CUSTOM STEAM SHOWER & WI closet. The basement is started & ready for your finishing touch! (id:6769)

Living room 5.3 m X 4.2 m

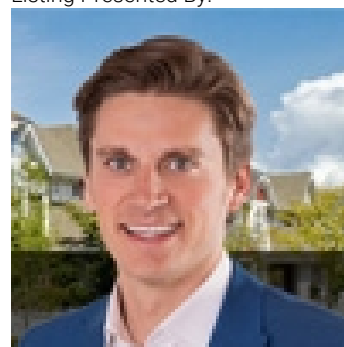
Dining room 3.19 m X 2.5 m

Kitchen 3.66 m X 3.62 m

Primary Bedroom 4.2 m X 3.18 m

Bedroom 2 4.18 m X 2.82 m

Listing Presented By:



Originally Listed by:
RE/MAX Elite

<http://www.horsepowerranch.com/>



CREA

DDF

#230, 70 Mcleod Ave , Spruce
Grove, AB,

Phone: 780-920-0550
tyson@royallepage.ca

The property information on this website is derived from the Canadian Real Estate Association's Data Distribution Facility (DDF®). DDF® references real estate listings held by various brokerage firms and franchisees. The accuracy of information is not guaranteed and should be independently verified. The trademarks REALTOR®, REALTORS® and the REALTOR® logo are controlled by The Canadian Real Estate Association (CREA) and identify real estate professionals who are members of CREA. The trademarks MLS®, Multiple Listing Service® and the associated logos are owned by CREA and identify the quality of services provided by real estate professionals who are members of CREA.