



## Edmonton Alberta

\$265,000

INCREDIBLE LOCATION! This is downtown living at it's finest! Unique unit offers 900 sqft on TWO levels & TWO underground Parking Stalls. The SHOW-STOPPING Main Floor is Showered in Sunlight thanks to a HUGE BANK OF WINDOWS. Gourmet kitchen w/ loads of White maple cabinets, Pantry, Built in Oven, Cooktop. The Spacious Living Room leads out to a Private Balcony to enjoy your morning coffee. Upstairs are 2 Great size Bedrooms, Master bedroom is equipped with a large Walk-In Closet. A 4 Piece Bath and Upper Laundry Complete the Upper Level. TWO HEATED U/G parking, storage unit & AIR CONDITIONED. PREMIERE Location, Close to restaurants, shops, transit, ARENA district. MUST VIEW! (id:6769)

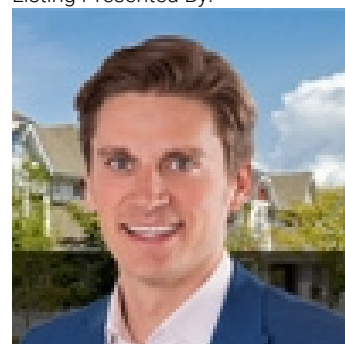
Living room 5.06 m X 4.53 m

Kitchen 4.37 m X 2.44 m

Primary Bedroom 3.26 m X 3.46 m

Bedroom 2 2.74 m X 3.24 m

Listing Presented By:



Originally Listed by:  
RE/MAX Elite

<http://www.riverbendricky.com/>



Royal

**Le Page Noralta Spruce Grove**

#230, 70 Mcleod Ave , Spruce  
Grove, AB,

Phone: 780-920-0550

Fax:

tyson@royallepage.ca

The property information on this website is derived from the Canadian Real Estate Association's Data Distribution Facility (DDF®). DDF® references real estate listings held by various brokerage firms and franchisees. The accuracy of information is not guaranteed and should be independently verified. The trademarks REALTOR®, REALTORS® and the REALTOR® logo are controlled by The Canadian Real Estate Association (CREA) and identify real estate professionals who are members of CREA. The trademarks MLS®, Multiple Listing Service® and the associated logos are owned by CREA and identify the quality of services provided by real estate professionals who are members of CREA.