



St. Albert Alberta

\$328,800

End unit 1100 sq ft bungalow townhouse in excellent central St. Albert location! Two bedrooms plus den. Lovely 11 unit complex Liberton Place. Spacious entry with access to 11'x22' single attached, insulated garage. Living room has hardwood floor and bay window. The primary bedroom has a walk-in closet and 2 pce ensuite. There is an additional 4 pce bath, den and second bedroom. The kitchen has a pantry, dining area and access to a raised deck. The lower level is partially framed and drywalled with a rec room, den, a two piece bath and brand new plumbing lines! Easy access to shopping and all amenities. (id:6769)

Family room Measurements not available

Laundry room Measurements not available

Living room 5.6 m X 4.6 m

Dining room 3.9 m X 2.5 m

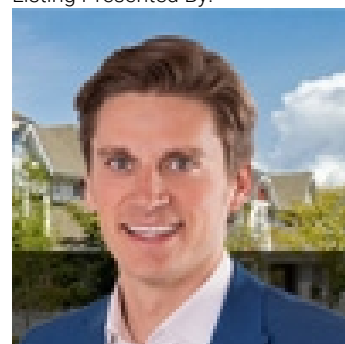
Kitchen 3.4 m X 2.2 m

Den 4 m X 3.4 m

Primary Bedroom 3.9 m X 3.5 m

Bedroom 2 2.9 m X 2.7 m

Listing Presented By:



Originally Listed by:
RE/MAX Elite

<http://www.calldale4asale.com/>



Royal

Le Page Noralta Spruce Grove

#230, 70 Mcleod Ave , Spruce
Grove, AB,

Phone: 780-920-0550

Fax:

tyson@royallepage.ca

The property information on this website is derived from the Canadian Real Estate Association's Data Distribution Facility (DDF®). DDF® references real estate listings held by various brokerage firms and franchisees. The accuracy of information is not guaranteed and should be independently verified. The trademarks REALTOR®, REALTORS® and the REALTOR® logo are controlled by The Canadian Real Estate Association (CREA) and identify real estate professionals who are members of CREA. The trademarks MLS®, Multiple Listing Service® and the associated logos are owned by CREA and identify the quality of services provided by real estate professionals who are members of CREA.