



## Rural Leduc County Alberta

\$799,900

Super UPGRADED & UPDATED 1135 sq. ft. BUNGALOW on a 3.11 FENCED, TREED & ROLLING ACRES with a DOUBLE GARAGE plus a 70' x 38' SHOP with CONCRETE & POWER, MINUTES TO BEAUMONT/LEDUC. MODERN FARMHOUSE describes this COUNTRY HOME which offers a CENTRAL FOYER, a generous LIVING ROOM features newer LUXURY VINYL PLANK & large picture window. The SPACIOUS KITCHEN has an abundance of RICH WHITE CABINETS with BLACK ACCENTS, a CENTRAL ISLAND with a newer GAS COOKTOP, PANTRY, KNOTTY PLANK FLOORING, great DINING SPACE & access to the COMPOSITE DECK & HOT TUB & YARD. The main bath combines an 4 PC. BATH & plenty of room for the LAUNDRY! Two large bedrooms complete the main floor. Down the CENTRAL STAIRCASE to the FINISHED BASEMENT offering a lovely family room with HI EFFICIENCY FIREPLACE plus a 2nd KITCHEN with fridge and stove. A 3 piece bath with shower & upgraded dual flush toilet, plus 2 generous sized bedrooms PLUS DIRECT ACCESS UP TO THE BREEZEWAY. UPGRADED FURNACE, HWT, METAL ROOFS, PVC WINDOWS & SEPTIC, PLUMBING. (id:6769)

Family room 5.18 m X 3.45 m

Bedroom 3 4.01 m X 3.54 m

Bedroom 4 4.01 m X 3.55 m

Second Kitchen 2.72 m X 4.16 m

Living room 4.54 m X 3.82 m

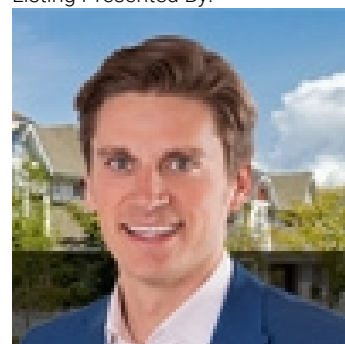
Dining room 2.38 m X 3.96 m

Kitchen 3.91 m X 3.16 m

Primary Bedroom 3.62 m X 4.04 m

Bedroom 2 2.75 m X 4.28 m

Listing Presented By:



Originally Listed by:  
RE/MAX Elite

<http://www.horsepowerranch.com/>



Royal

**Le Page Noralta Spruce Grove**

#230, 70 Mcleod Ave , Spruce Grove, AB,

Phone: 780-920-0550

Fax:

tyson@royallepage.ca

The property information on this website is derived from the Canadian Real Estate Association's Data Distribution Facility (DDF®). DDF® references real estate listings held by various brokerage firms and franchisees. The accuracy of information is not guaranteed and should be independently verified. The trademarks REALTOR®, REALTORS® and the REALTOR® logo are controlled by The Canadian Real Estate Association (CREA) and identify real estate professionals who are members of CREA. The trademarks MLS®, Multiple Listing Service® and the associated logos are owned by CREA and identify the quality of services provided by real estate professionals who are members of CREA.