



## Edmonton Alberta

\$229,800

Rare two bedroom plus study (or third bedroom if the need is there) unit in Rutherford Village. Very spacious unit with large open living, dining and kitchen area. Two extra large bedrooms will easily accommodate King sized bedroom suites. This main floor unit has a large patio with gas hook up and is south east facing. There is one underground heated stall with locked storage cage and one outside stall directly in front of the unit. Close to all amenities such as shopping recreation centre, Anthony Henday freeway system and Hwy 2 south to Edmonton International Airport (id:6769)

Living room 3.01 m X 4.55 m

Dining room 1.82 m X 2.75 m

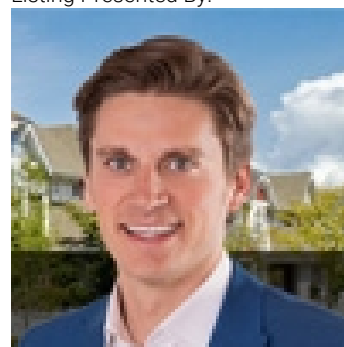
Kitchen 2.32 m X 3.23 m

Den 2.59 m X 3.67 m

Primary Bedroom 3.55 m X 6.33 m

Bedroom 2 3.09 m X 4.9 m

Listing Presented By:



Originally Listed by:  
RE/MAX Elite

<http://www.denisrowley.com/>



Royal

**Le Page Noralta Spruce Grove**

#230, 70 Mcleod Ave , Spruce  
Grove, AB,

Phone: 780-920-0550

Fax:

[tyson@royalpage.ca](mailto:tyson@royalpage.ca)

The property information on this website is derived from the Canadian Real Estate Association's Data Distribution Facility (DDF®). DDF® references real estate listings held by various brokerage firms and franchisees. The accuracy of information is not guaranteed and should be independently verified. The trademarks REALTOR®, REALTORS® and the REALTOR® logo are controlled by The Canadian Real Estate Association (CREA) and identify real estate professionals who are members of CREA. The trademarks MLS®, Multiple Listing Service® and the associated logos are owned by CREA and identify the quality of services provided by real estate professionals who are members of CREA.