

Edmonton Alberta

\$178,800

Fall in love with the perfect combination of space, style, and location at Park Place at Terwillegar Terrace. This bright and modern 3-bedroom, 2 full bathroom home offers an open-concept design that's both functional and inviting, with large windows bringing in an abundance of natural light. The kitchen is a true centerpiece, featuring stainless steel appliances, a spacious island, and ample storage—ideal for entertaining or everyday living. The primary bedroom is complete with a walk-in closet and private ensuite, while two additional bedrooms provide versatility for family, guests, or a home office. Step outside to your own private outdoor space, perfect for unwinding or enjoying your morning coffee. Located just minutes from parks, schools, shopping, and transit, this home delivers exceptional value in a highly desirable community. A fantastic opportunity you won't want to miss! (id:6769)

Living room 4.7 m X 3.6 m

Dining room 3.3 m X 3 m

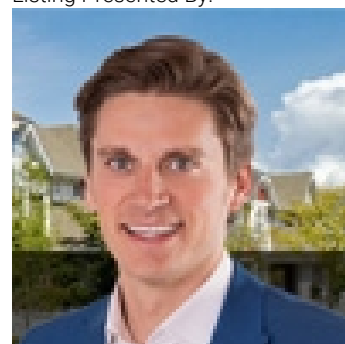
Kitchen 3.5 m X 2.9 m

Primary Bedroom 5 m X 3.6 m

Bedroom 2 3.6 m X 3 m

Bedroom 3 3.9 m X 3.6 m

Listing Presented By:



Originally Listed by:
RE/MAX Elite



Royal

Le Page Noralta Spruce Grove

#230, 70 Mcleod Ave , Spruce
Grove, AB,

Phone: 780-920-0550

Fax:

tyson@royallepage.ca

The property information on this website is derived from the Canadian Real Estate Association's Data Distribution Facility (DDF®). DDF® references real estate listings held by various brokerage firms and franchisees. The accuracy of information is not guaranteed and should be independently verified. The trademarks REALTOR®, REALTORS® and the REALTOR® logo are controlled by The Canadian Real Estate Association (CREA) and identify real estate professionals who are members of CREA. The trademarks MLS®, Multiple Listing Service® and the associated logos are owned by CREA and identify the quality of services provided by real estate professionals who are members of CREA.