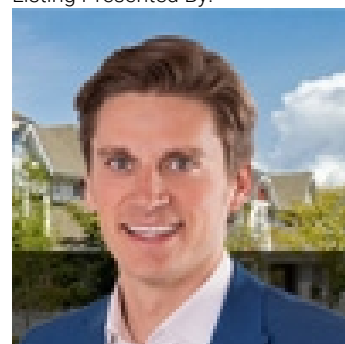


## Edmonton Alberta

\$335,000

TRENDY GLENORA GATES COMMERCIAL BUSINESS CONDO for SALE situated in a residential complex at ground level & located in a perfect central location right in the BREWERY DISTRICT. This TURNKEY OPERATION operates as THERAPEUTIC MASSAGE, BEAUTY AND MORE offering HOLISTIC & NATURAL TREATMENTS including REFLEXOLOGY plus SPA SERVICES including Manicures/Pedicures & Waxing. Well situated CORNER UNIT CONDO with 4 ROOMS & 1 FULL BATHROOM. It has a reception & sitting/waiting area right on the street entrance. Included are 2 TITLED UNDERGROUND PARKING STALLS and plenty of ON-SITE VISITOR parking for customers. This condominium is an appointed retail/commercial unit suitable for a wide range of retail & professional uses under DIRECT DEVELOPMENT CONTROL PROVISION (DC1-19312) ZONING. Ready for new owner & operation. All unattached fixtures are negotiable. Monthly Condo fees of \$620.86. (id:6769)

Listing Presented By:



Originally Listed by:  
RE/MAX Elite

<http://www.ryandutka.com/>



CREA

DDF

#230, 70 Mcleod Ave , Spruce  
Grove, AB,

Phone: 780-920-0550  
tyson@royallepage.ca

The property information on this website is derived from the Canadian Real Estate Association's Data Distribution Facility (DDF®). DDF® references real estate listings held by various brokerage firms and franchisees. The accuracy of information is not guaranteed and should be independently verified. The trademarks REALTOR®, REALTORS® and the REALTOR® logo are controlled by The Canadian Real Estate Association (CREA) and identify real estate professionals who are members of CREA. The trademarks MLS®, Multiple Listing Service® and the associated logos are owned by CREA and identify the quality of services provided by real estate professionals who are members of CREA.