



Rural Leduc County Alberta

\$874,900

This charming bungalow offers a perfect blend of privacy, and convenience on nearly 3 acres of beautifully landscaped land, just minutes from Beaumont on paved roads and city water. The home features a well-designed layout with a spacious living room, a large kitchen, and dining area ideal for everyday meals or entertaining. The primary large bedroom has a walk-in closet, ensuite, and a stunning view of the property. Two additional bedrooms and a full bathroom round out the upstairs. The lower level offers a rec space, family room, 4th bedroom, den, bathroom, laundry room, and cold storage. Upgrades include, a new roof, vinyl windows, newer driveway, flooring, stucco exterior, and deck. The home has been exceptionally maintained. Great curb appeal and plenty of room for outdoor activities. Double attached garage, and massive 2300sqft shop with three access doors and indoor parking for a full-size RV! a true bonus for those who love to tinker or need additional storage. Priced to move quickly! (id:6769)

Family room 7.37 m X 13.79 m

Den 4.19 m X 3.78 m

Bedroom 4 4.19 m X 3.62 m

Storage 3.61 m X 2.08 m

Laundry room 5.83 m X 2.91 m

Living room 4.73 m X 6.65 m

Dining room 4.33 m X 3.29 m

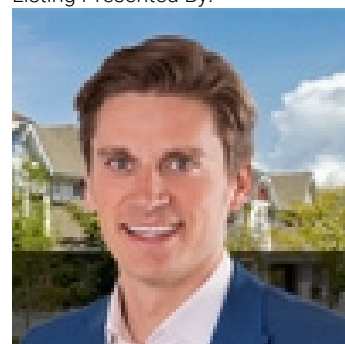
Kitchen 4.33 m X 3.91 m

Primary Bedroom 5.42 m X 4.91 m

Bedroom 2 3.97 m X 3.05 m

Bedroom 3 4.19 m X 3.78 m

Listing Presented By:



Originally Listed by:
RE/MAX Elite



CREA

DDF

#230, 70 Mcleod Ave , Spruce Grove, AB,

Phone: 780-920-0550
tyson@royallepage.ca

The property information on this website is derived from the Canadian Real Estate Association's Data Distribution Facility (DDF®). DDF® references real estate listings held by various brokerage firms and franchisees. The accuracy of information is not guaranteed and should be independently verified. The trademarks REALTOR®, REALTORS® and the REALTOR® logo are controlled by The Canadian Real Estate Association (CREA) and identify real estate professionals who are members of CREA. The trademarks MLS®, Multiple Listing Service® and the associated logos are owned by CREA and identify the quality of services provided by real estate professionals who are members of CREA.